



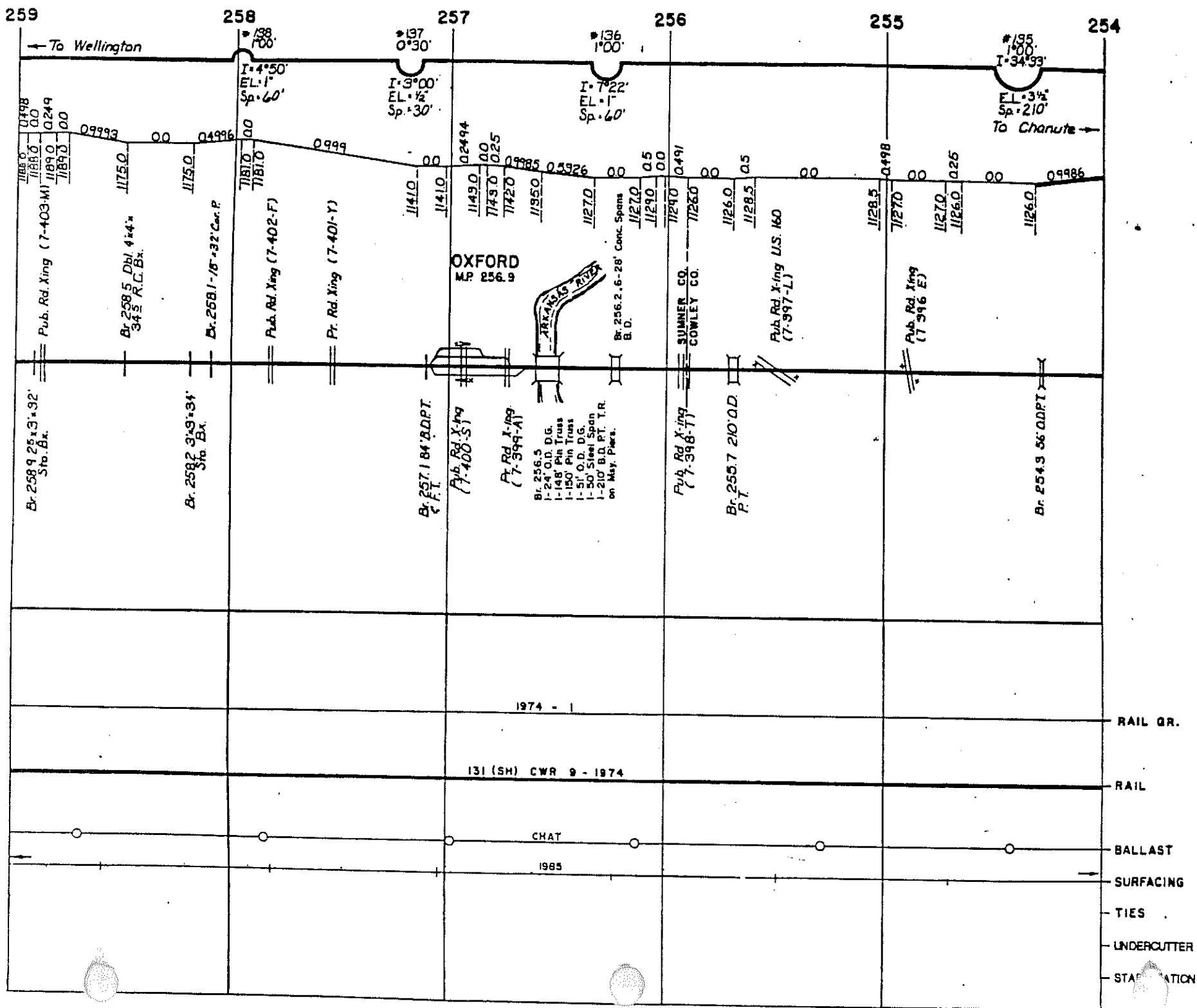
Track Chart Moline Subdivision

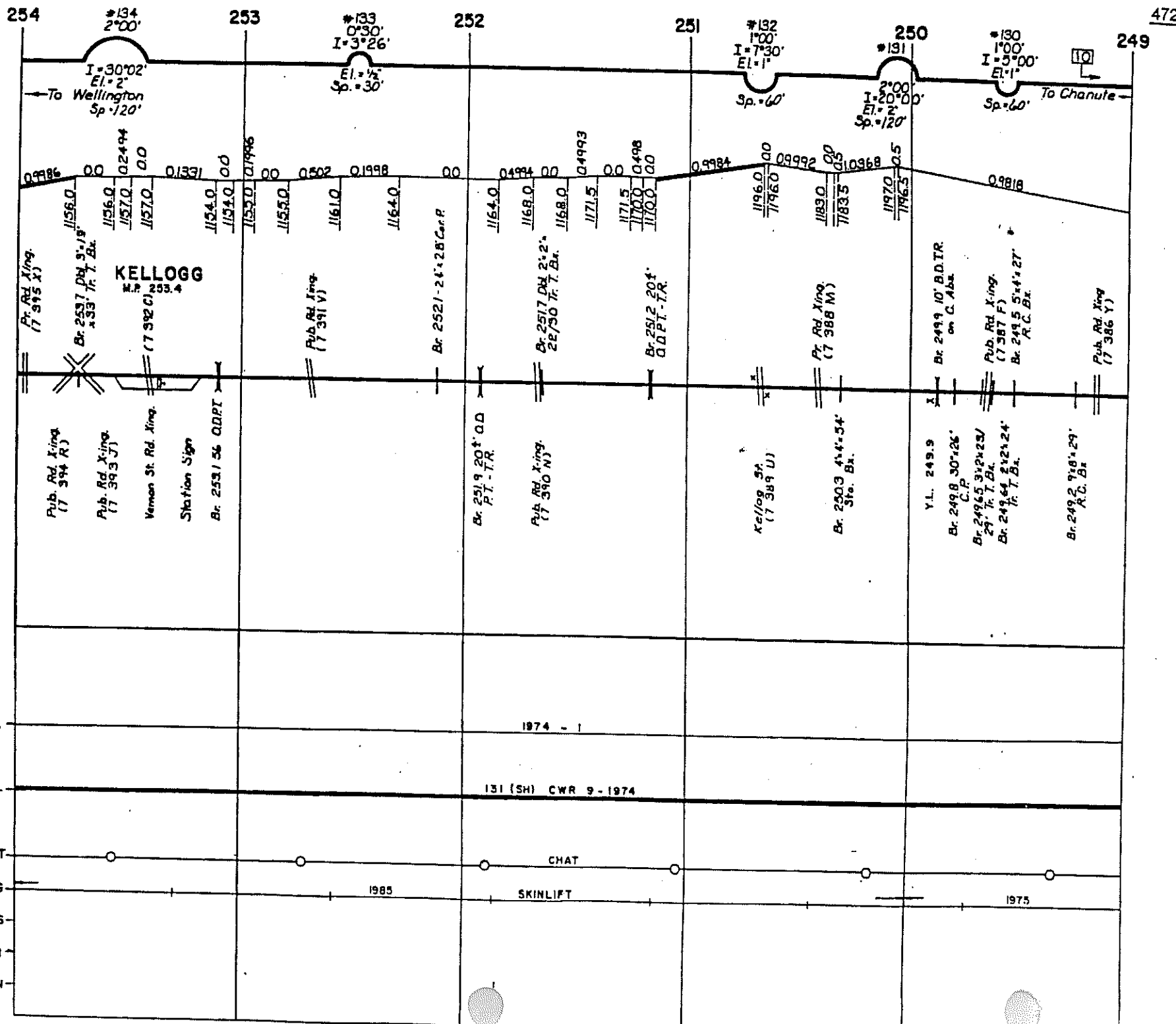
2021-2023 Playbook
Fredonia, KS to Oxford, KS
MP 152.5 – MP 246.0

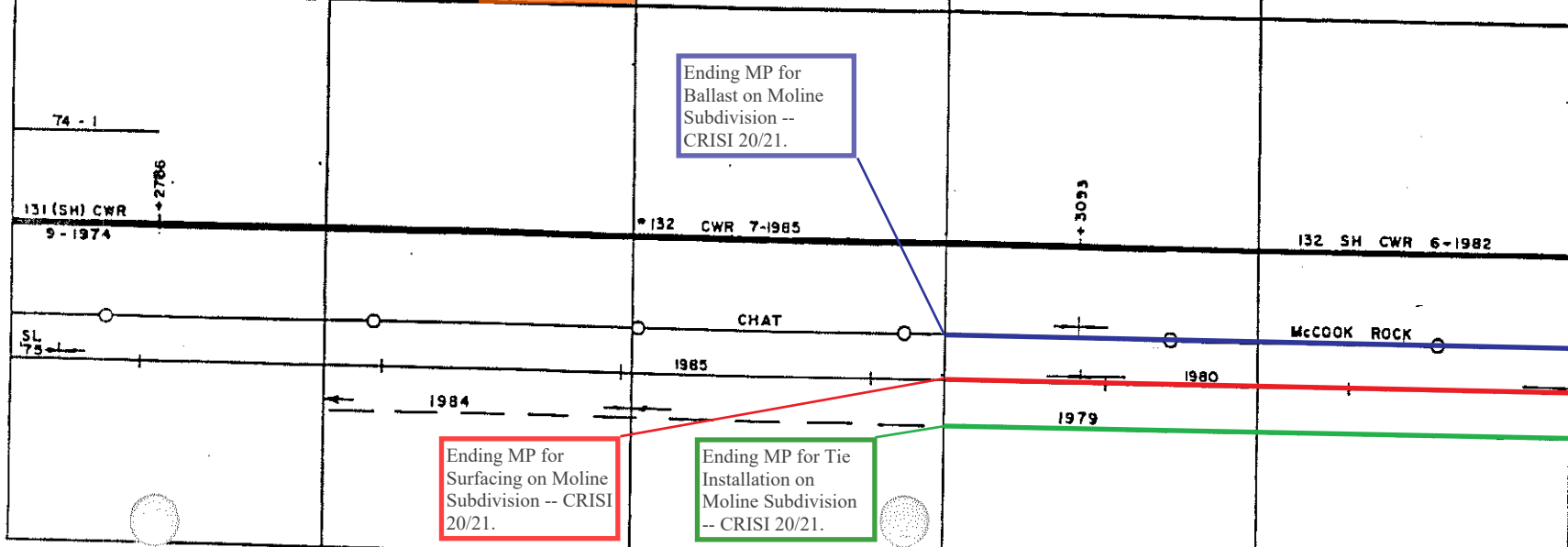
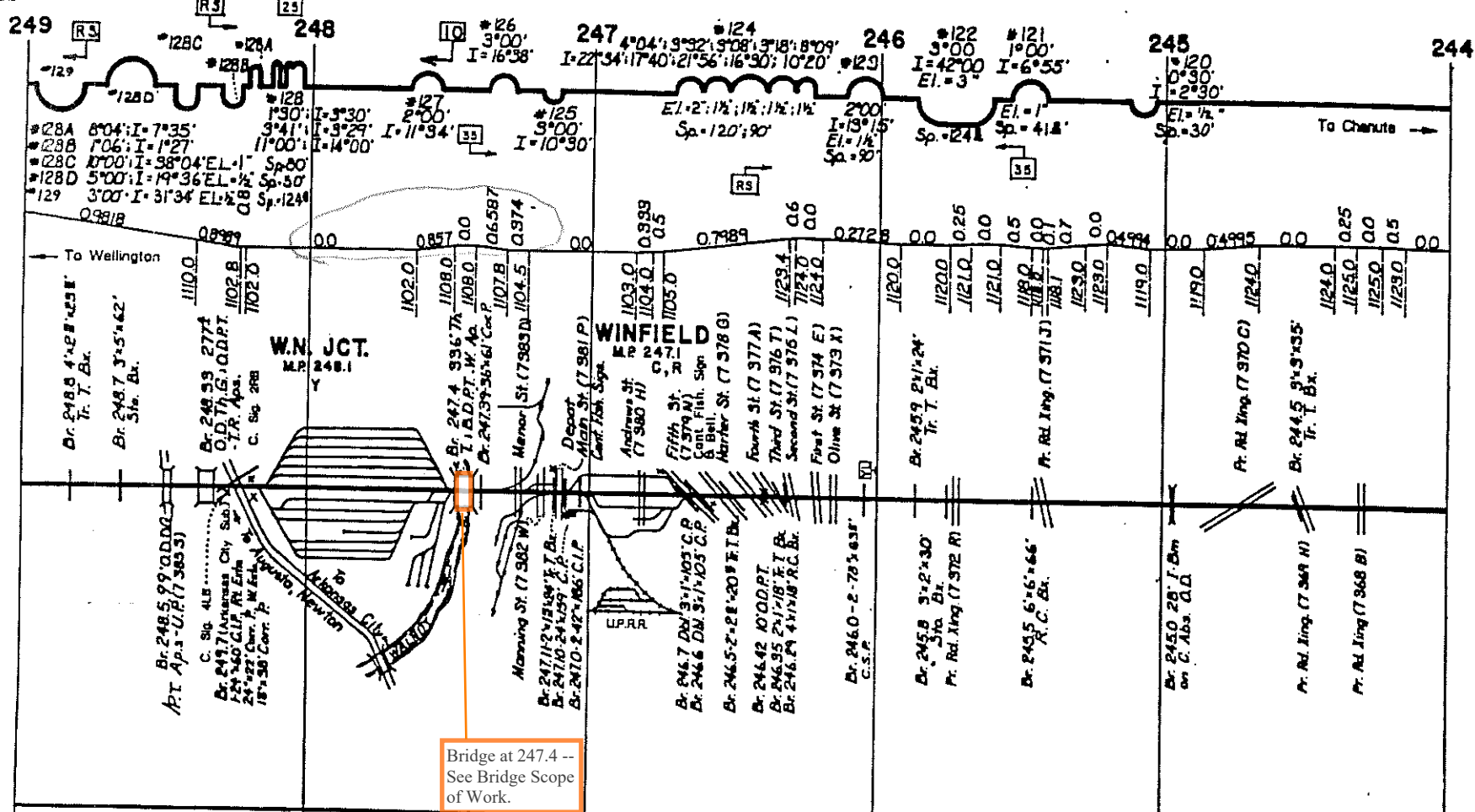
CRISI 20/21 Moline Subdivision Rehabilitation:

- Tie Installation: ———
- Ballast Installation: ———
- Surfacing: ———
- Bridge Rehabs: ———

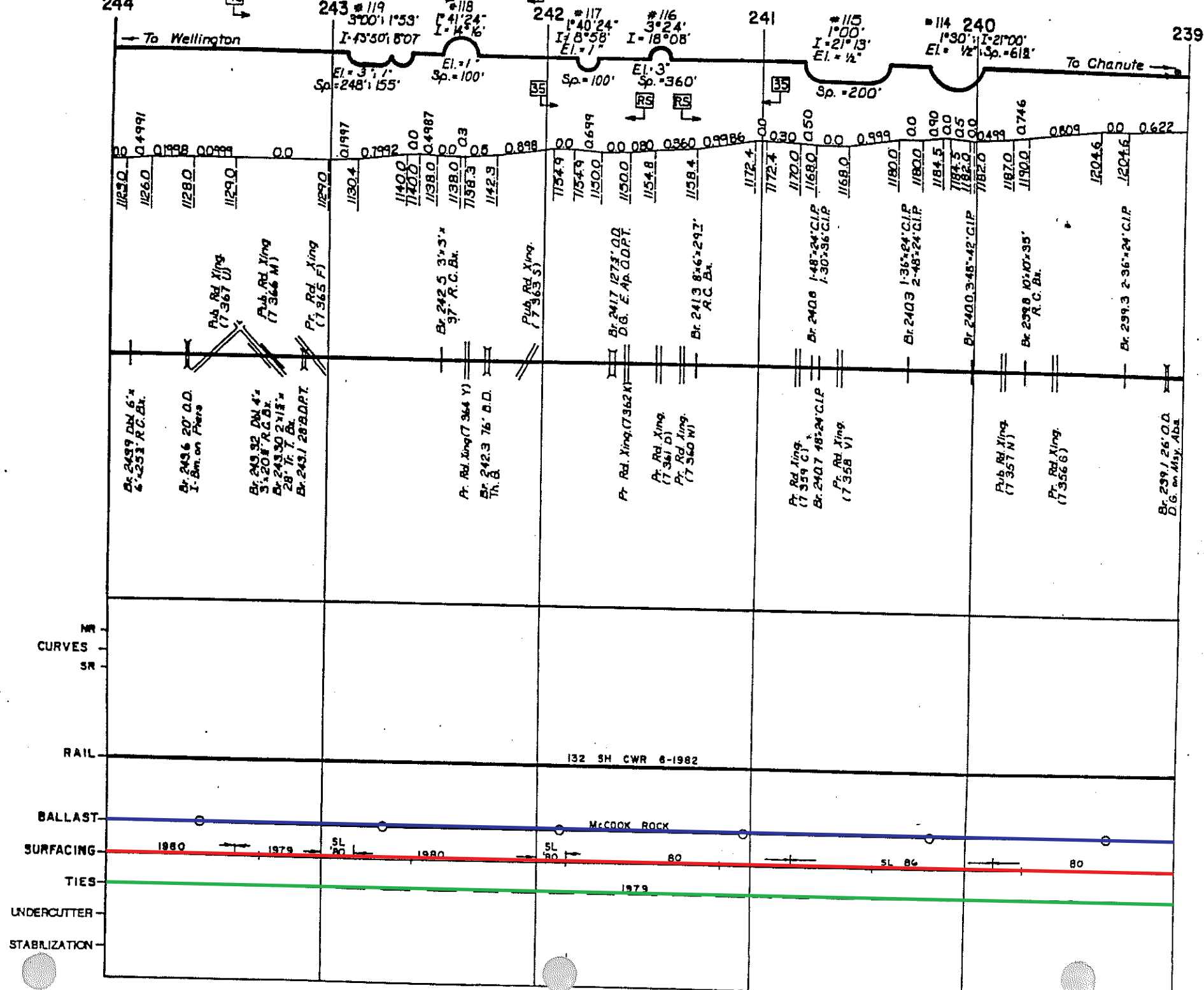
Revision Date: October 29, 2020

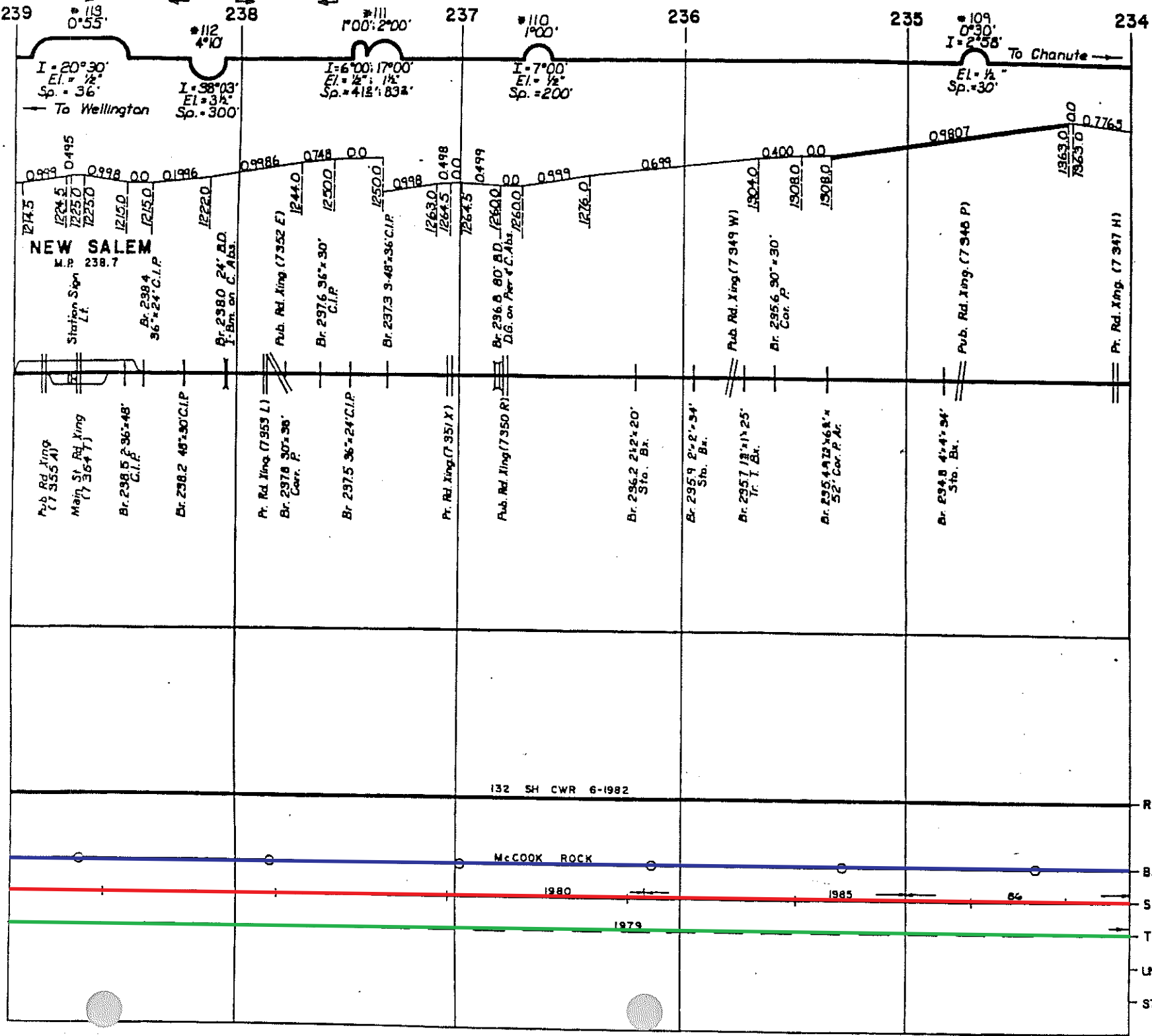




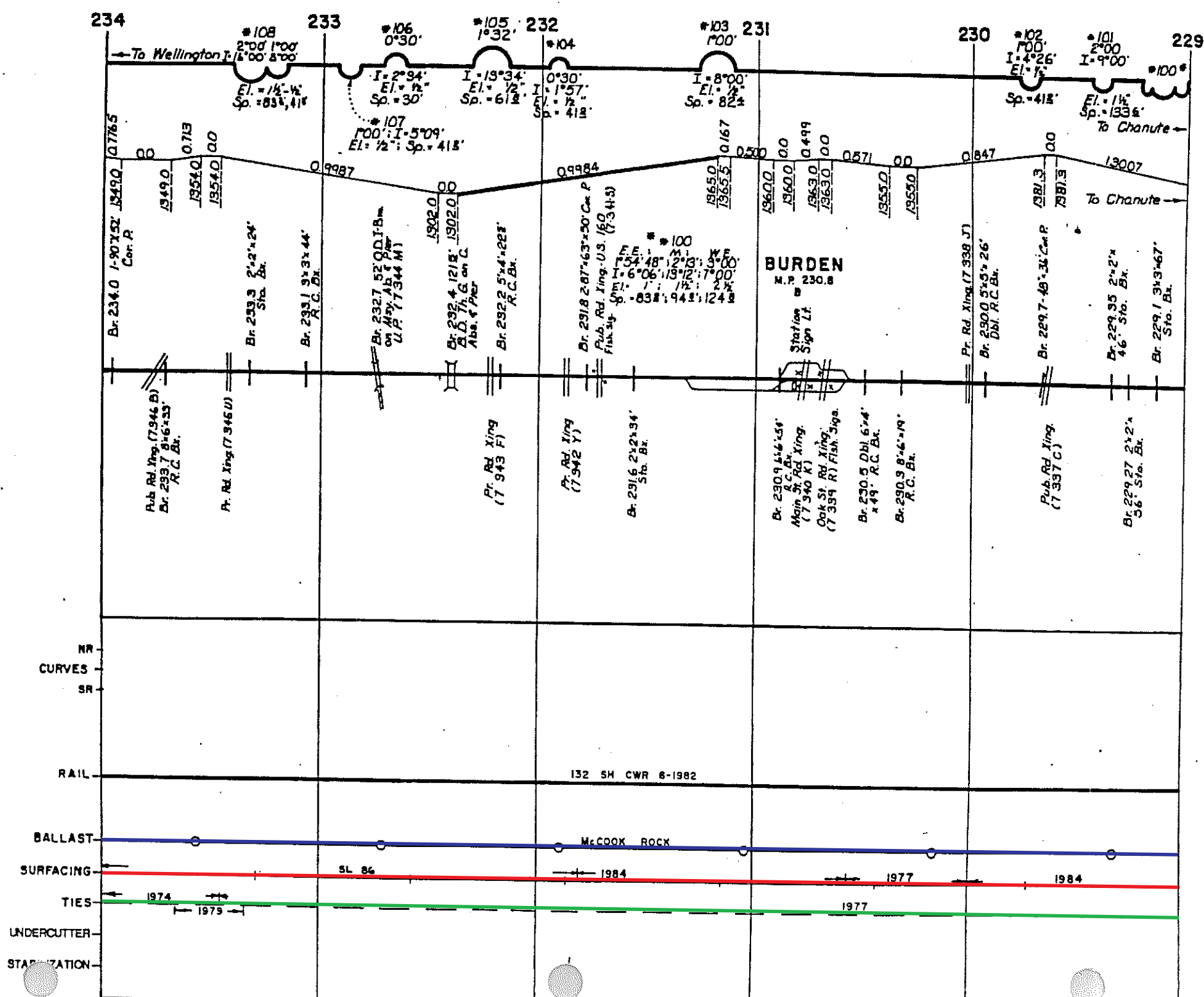


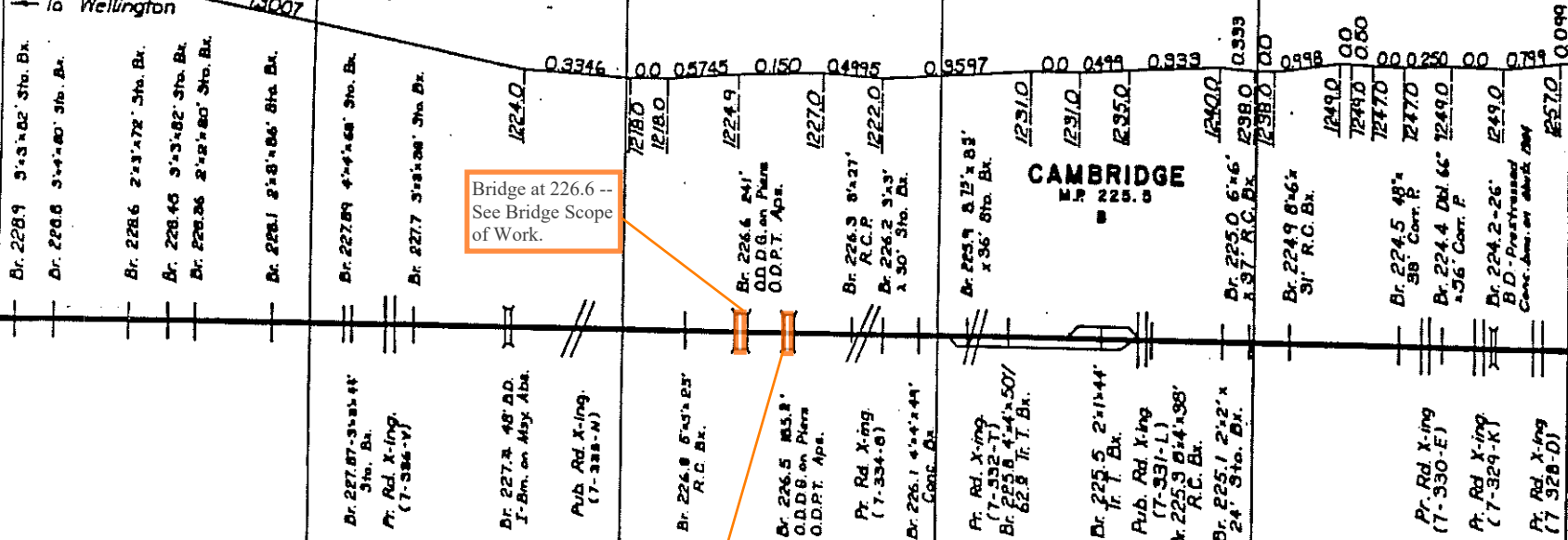
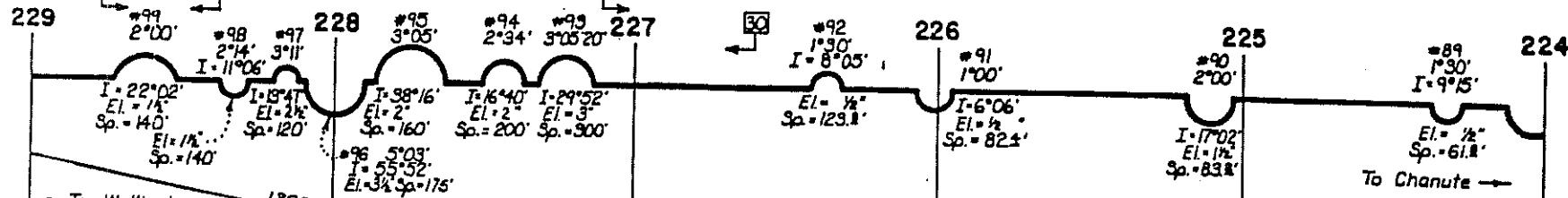
NR
CURVES
SR
RAIL GR.
RAIL
BALLAST
SURFACING
TIES
UNDERCUTTER
STAB





RAIL
BALLAST
SURFACING
TIES
UNDERCUTTER
STATIONATION



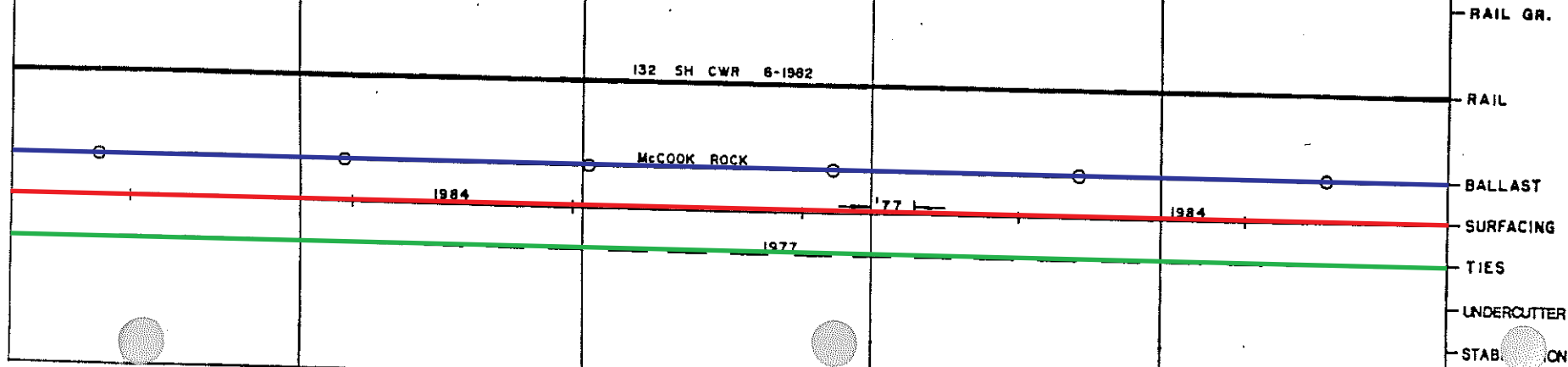


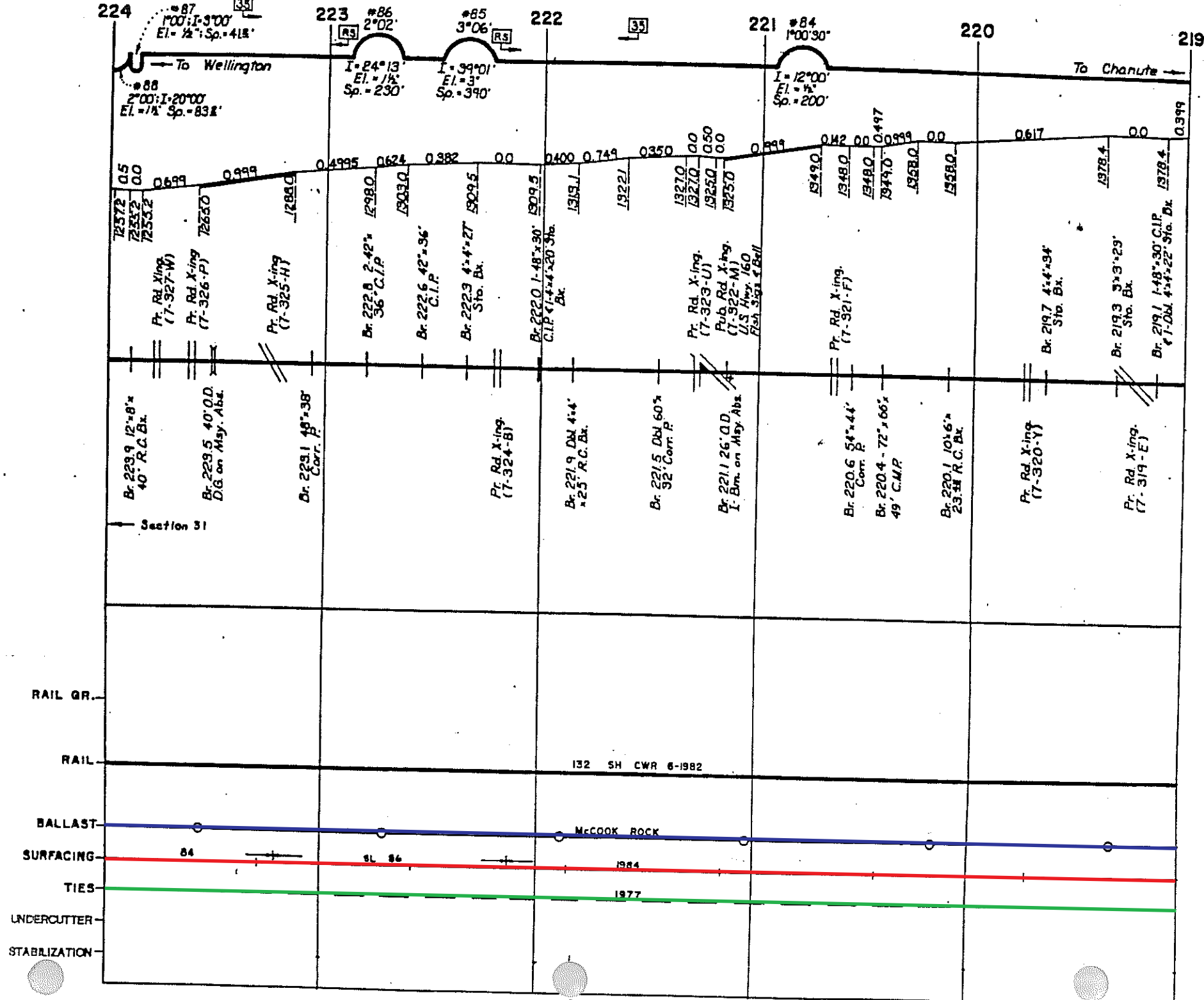
Bridge at 226.6 --
See Bridge Scope
of Work.

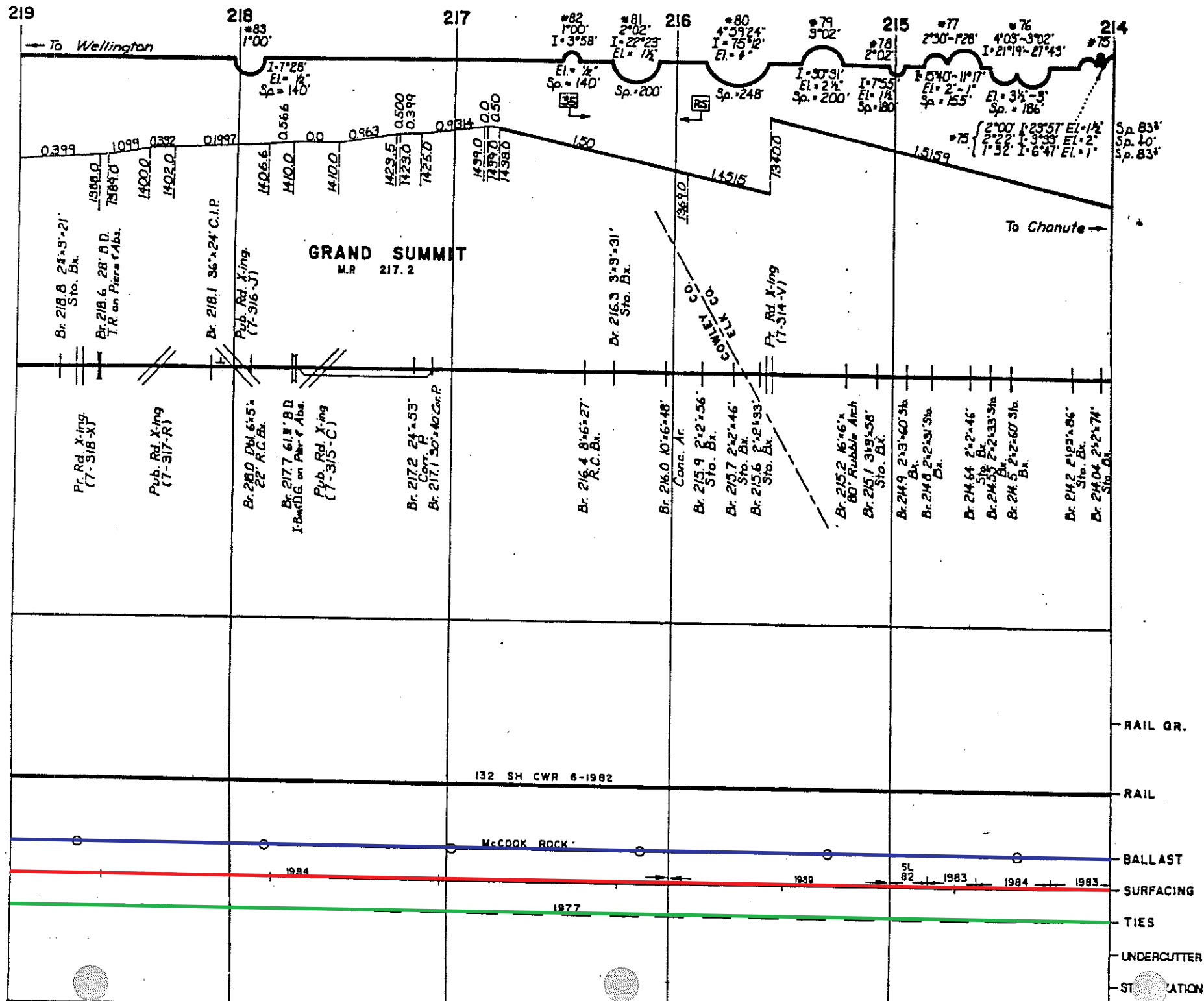
Bridge at 226.5 --
See Bridge Scope
of Work.

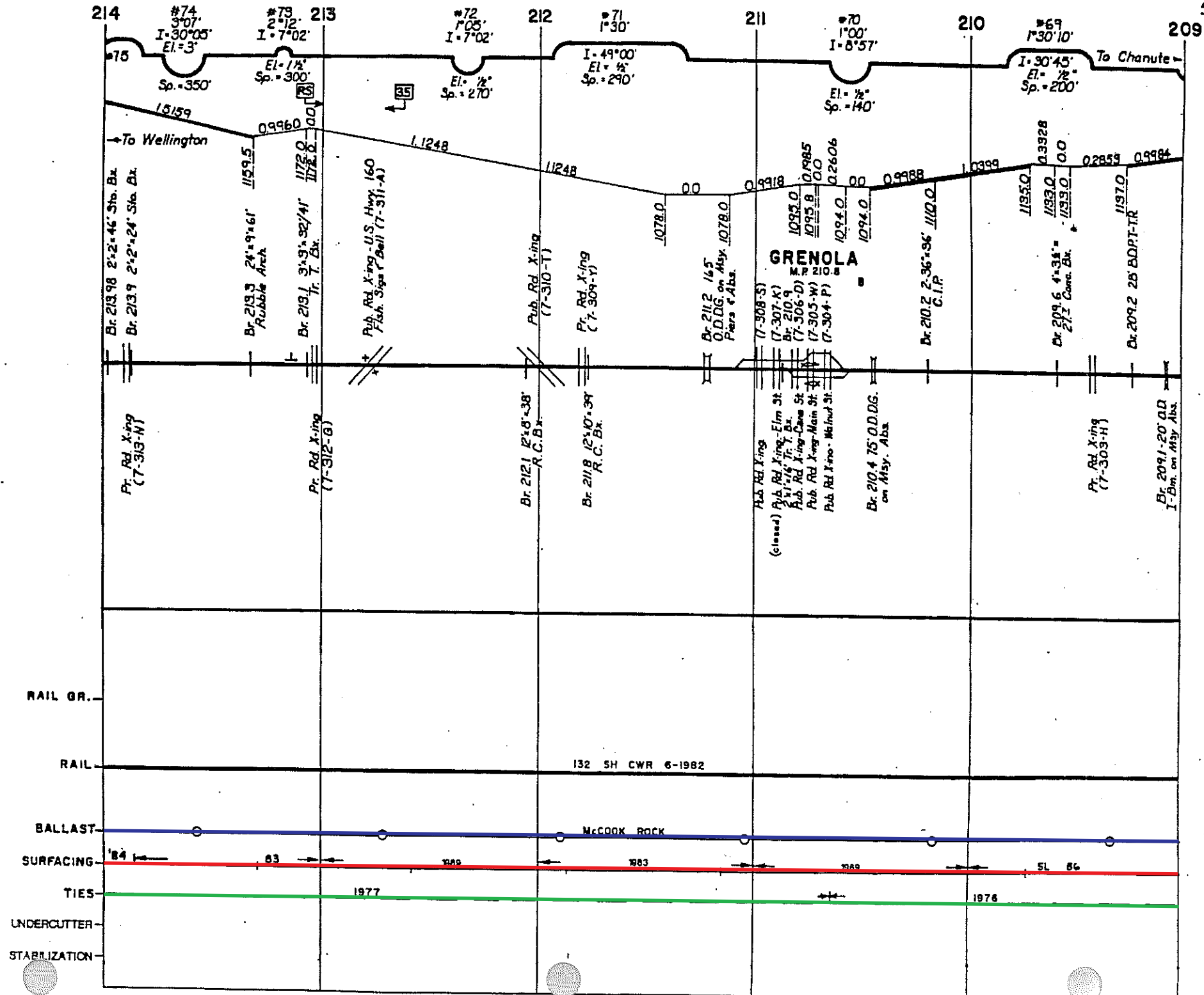
CAMBRIDGE
No. 225.0

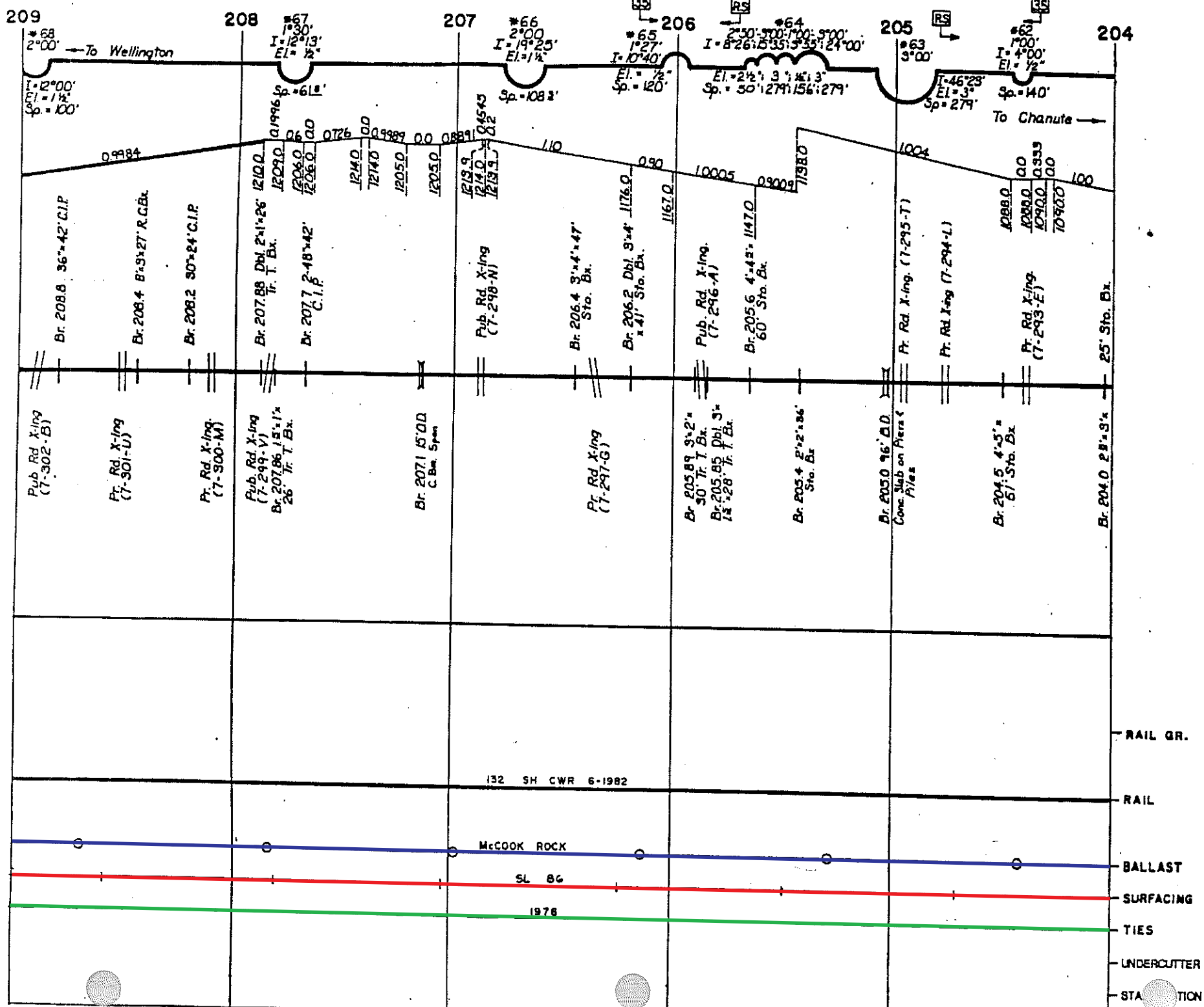
Section 32



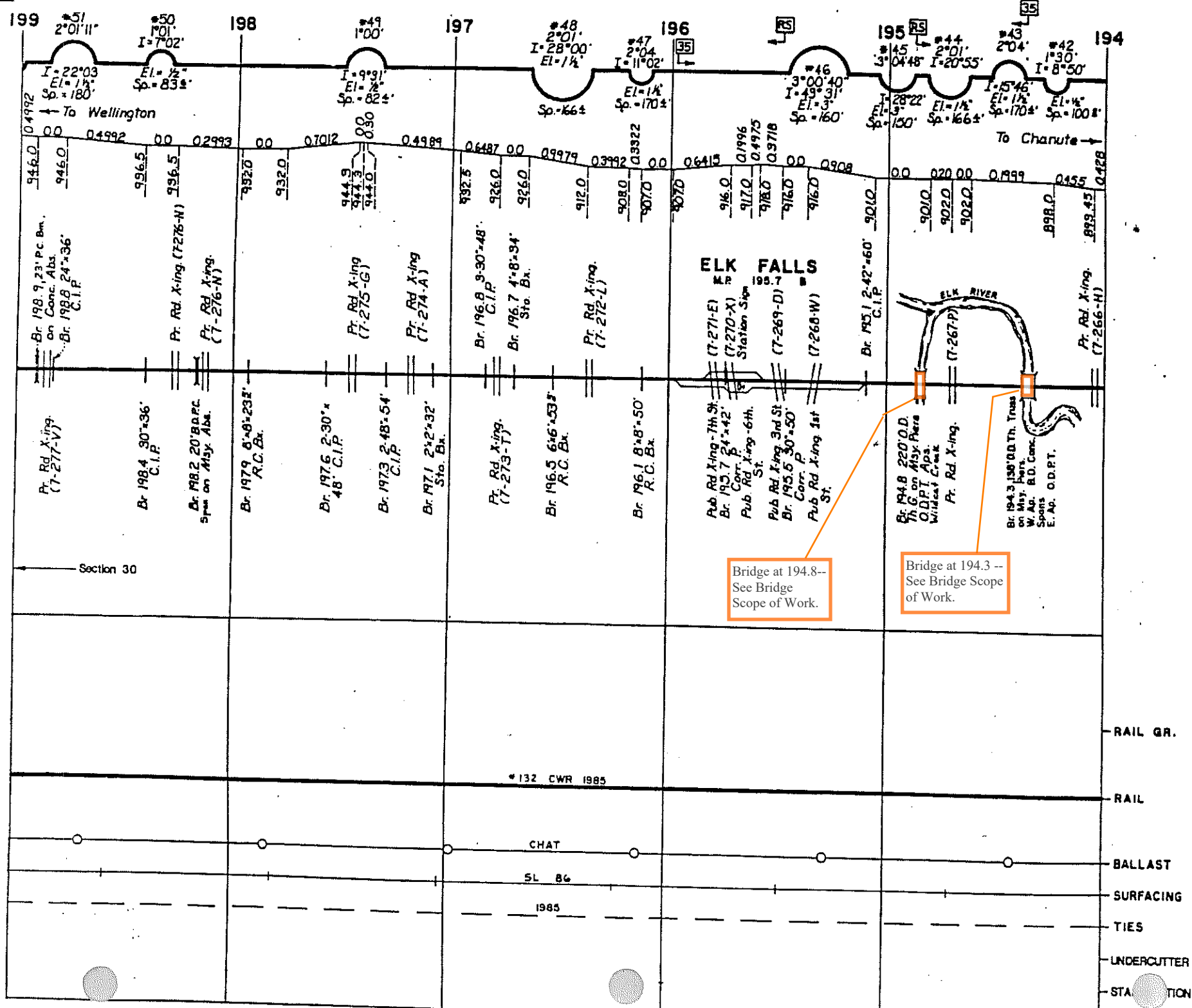


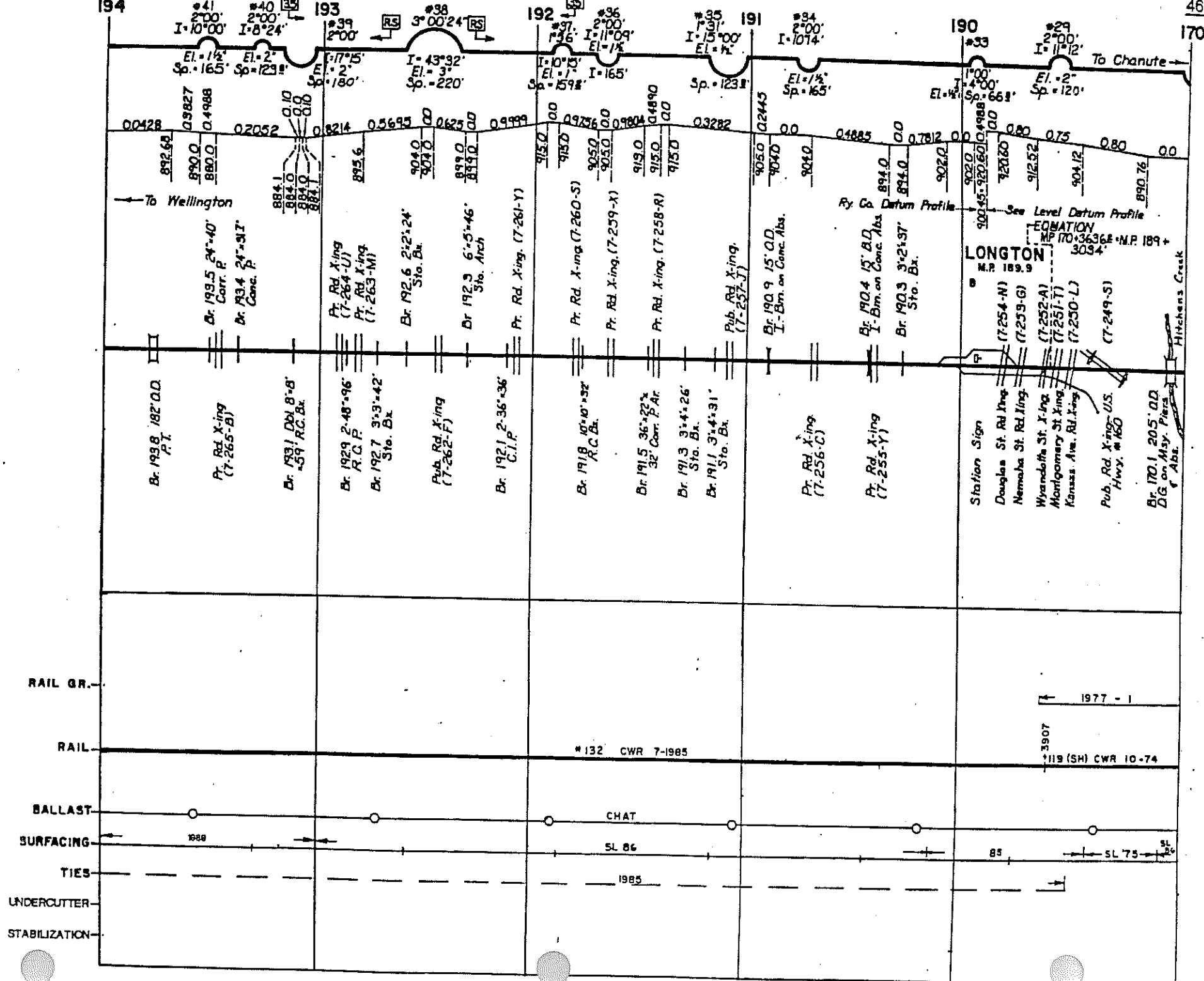






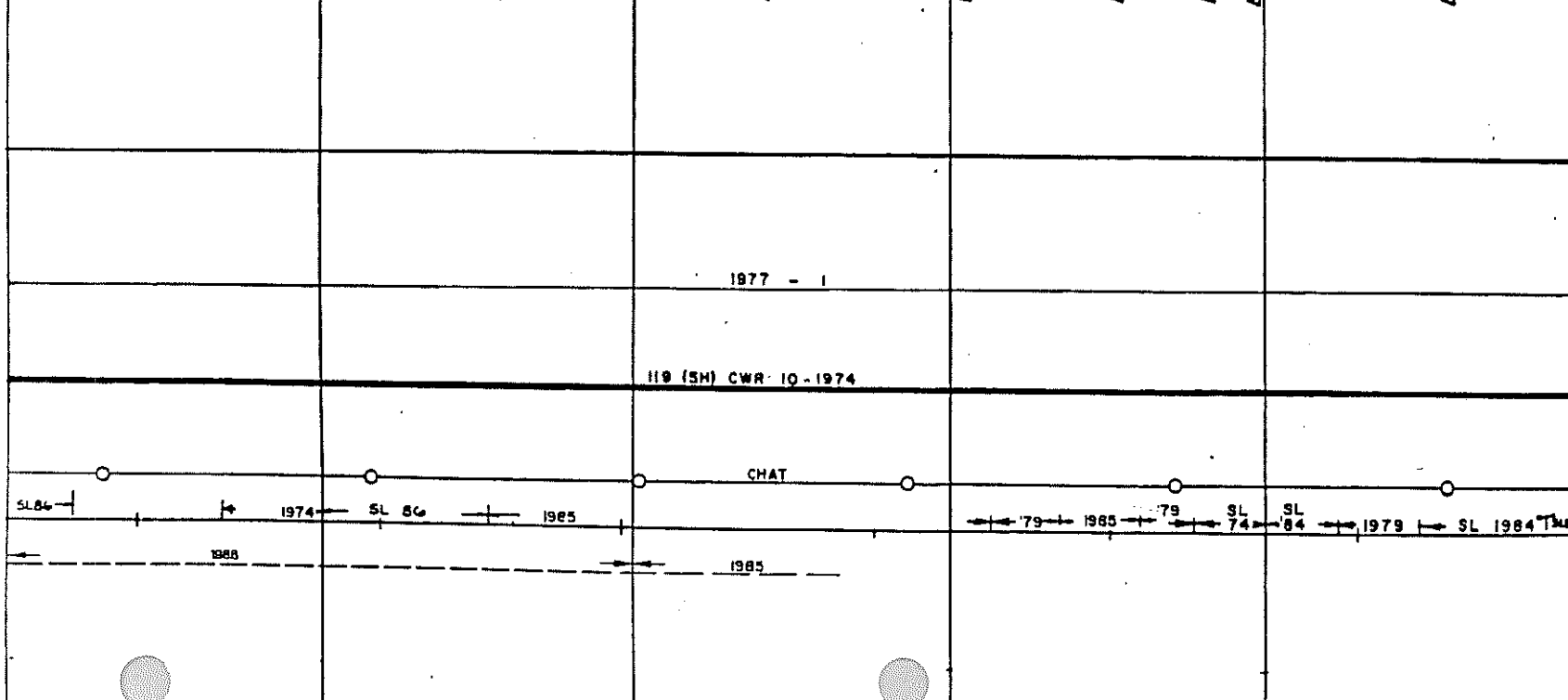
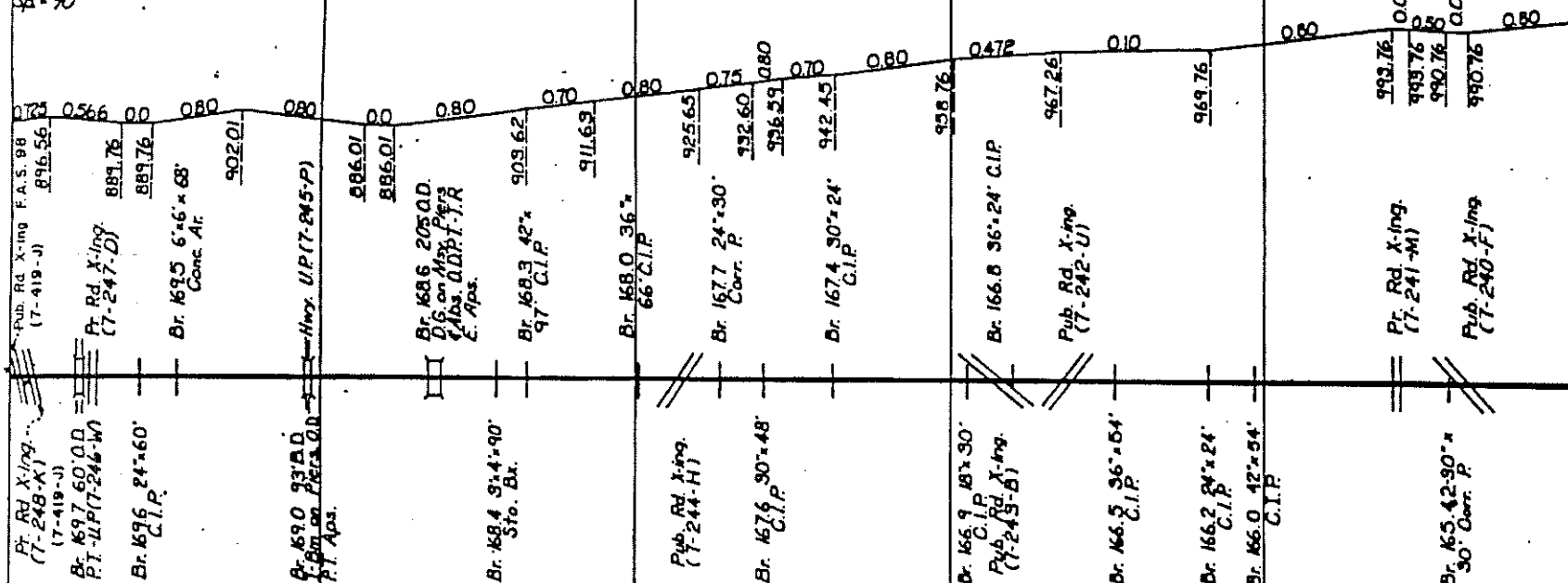


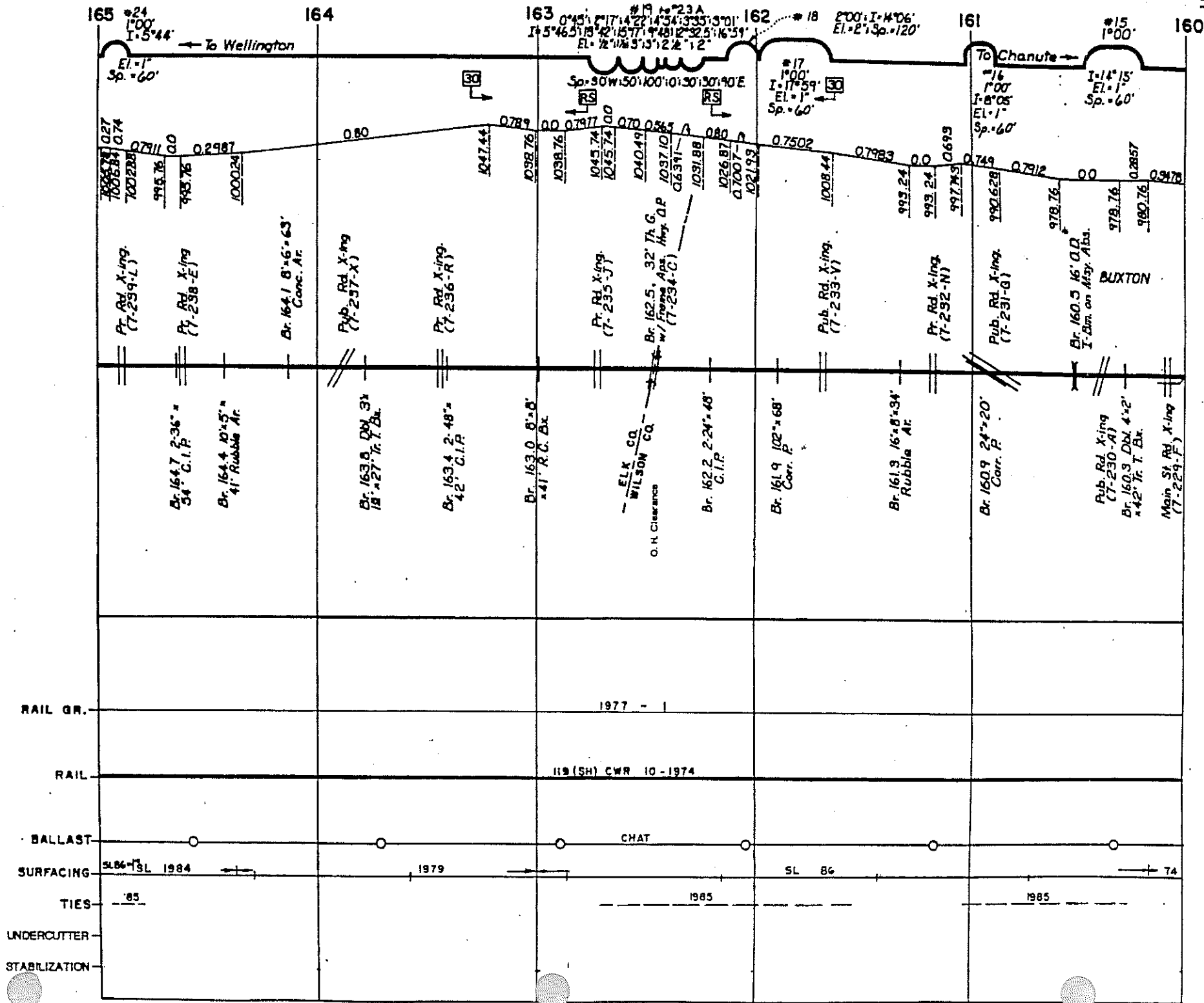




170 169 168 167 166 165

← To Wellington
 I. 11° 18' El. 112' Sp. 90'
 I. 22° 54' El. 220' Sp. 120'
 I. 16° 50' El. 220' Sp. 120'
 To Chanute →





160

159

158

157

156

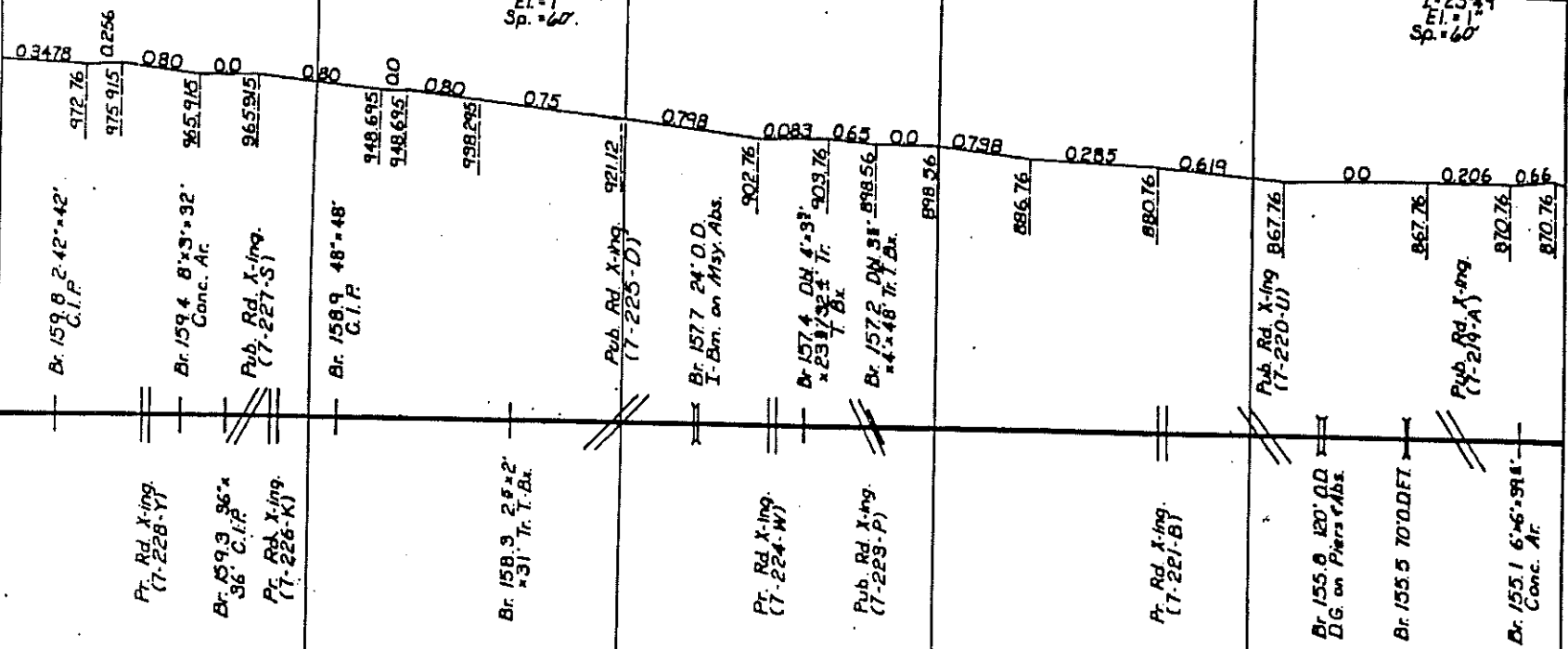
155

To Wellington

To Chanute

*14
100'
I=22°54'
El.=1'
Sp.=60'

*13
100'
I=23°49'
El.=1'
Sp.=60'



1977 - 1

118 (SH) CWR 10-1974

CHAT

SKINLIFT 1974

1985

79

1985

RAIL GR.
RAIL
BALLAST
SURFACING
TIES
UNDERCUTTER
STABIL

