



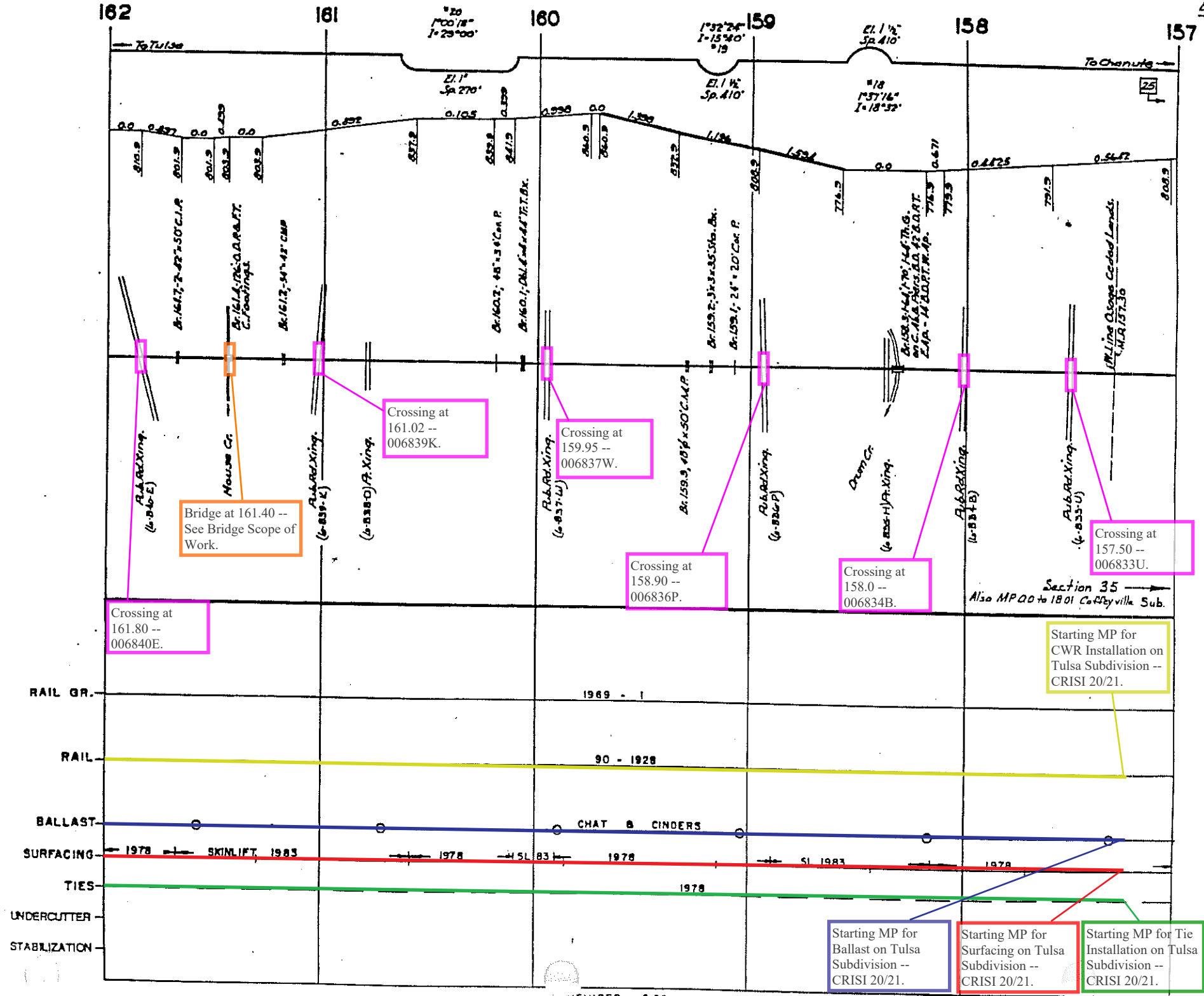
Track Chart Tulsa Subdivision

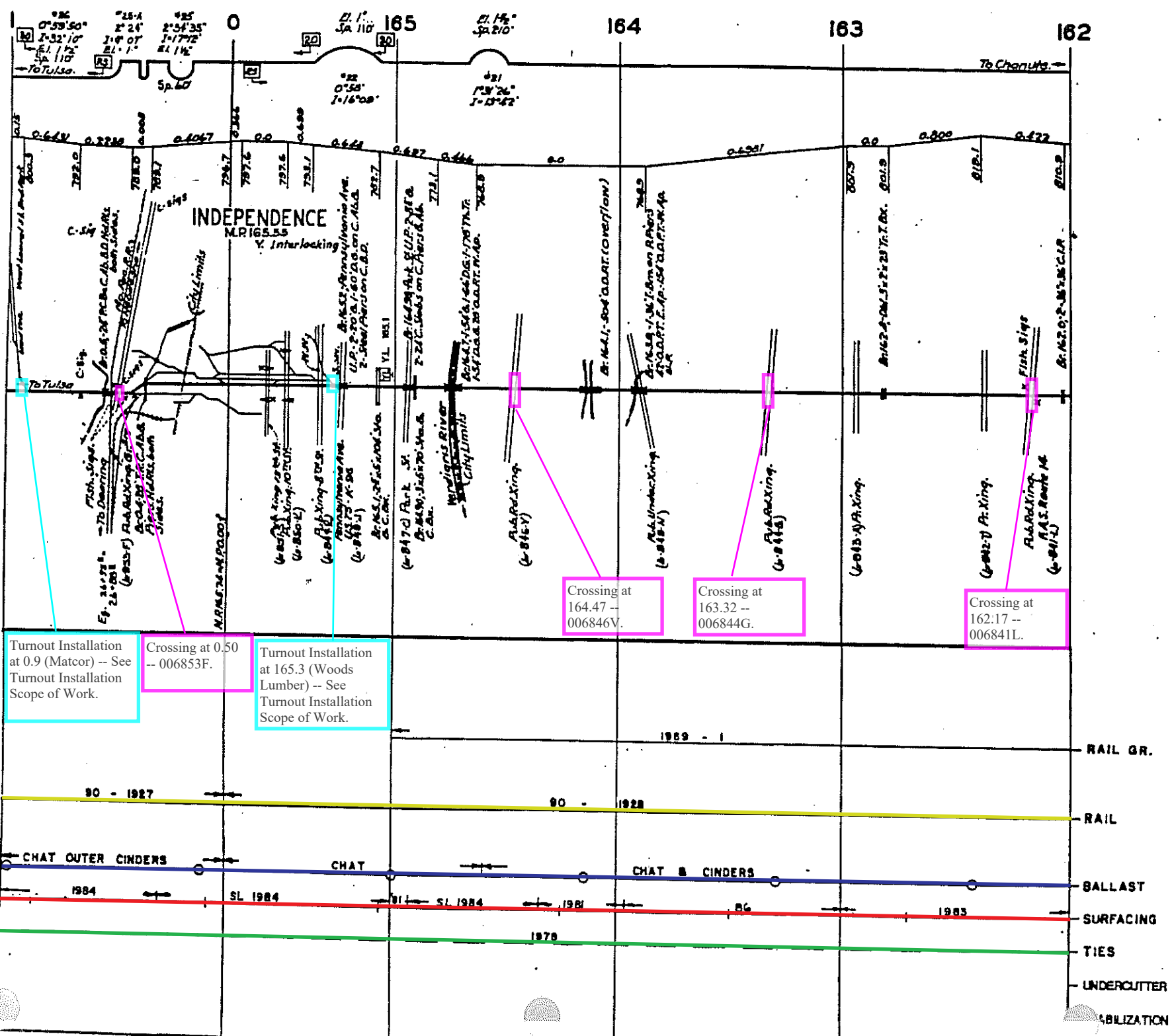
2021-2023 Playbook
Cherryvale, KS to Tulsa, OK
MP 156.2– MP 90.3

CRISI 20/21 Moline Subdivision Rehabilitation:

- Tie Installation: —
- Ballast Installation: —
- Surfacing: —
- Bridge Rehabs: —
- Crossing Rehabs: —
- Frank Phillips Blvd.: —
- CWR Installation: —
- Turnout Replacements: —

Revision Date: October 29, 2020





Turnout Installation at 0.9 (Matcor) -- See Turnout Installation Scope of Work.

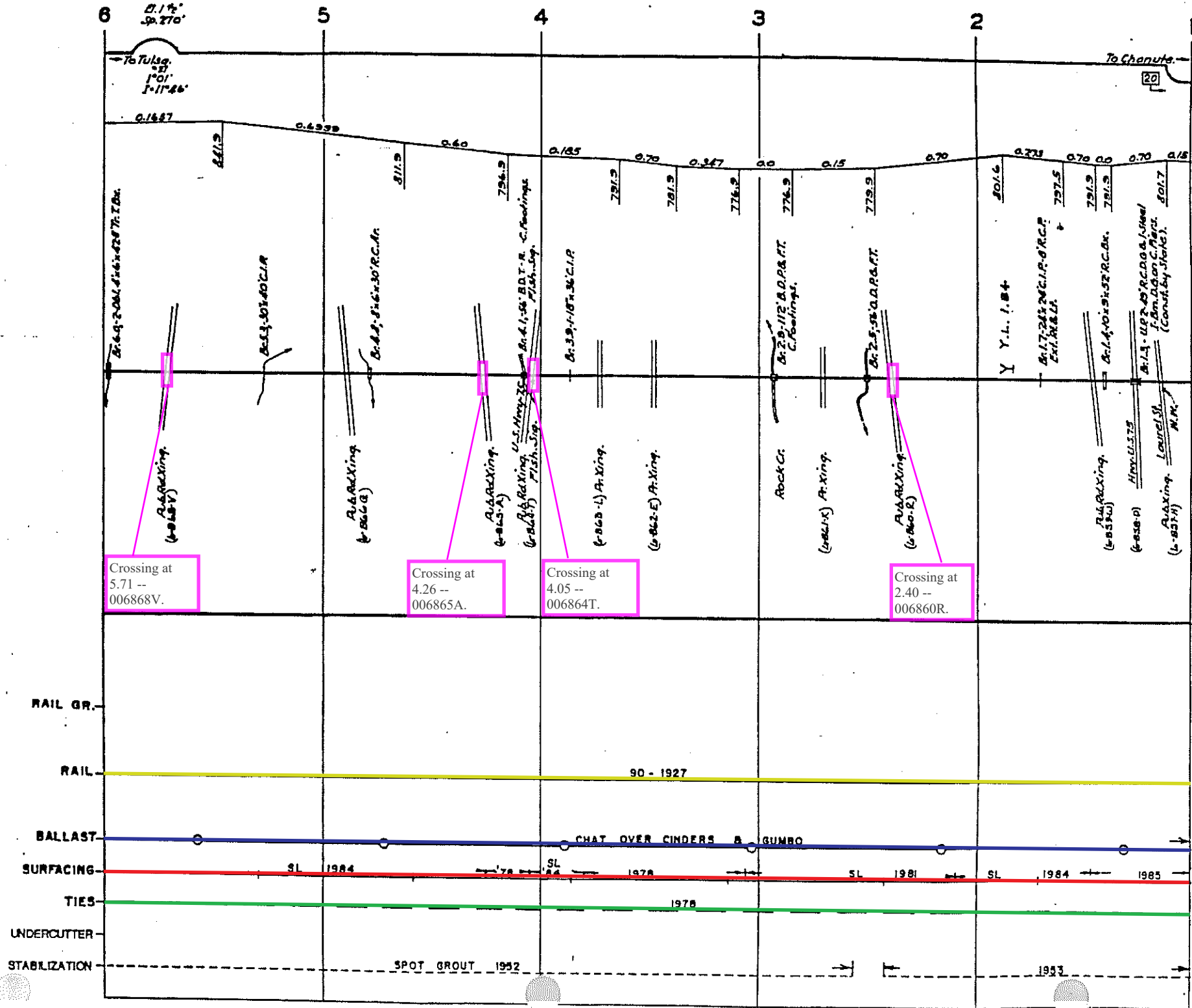
Crossing at 0.50 -- 006853F.

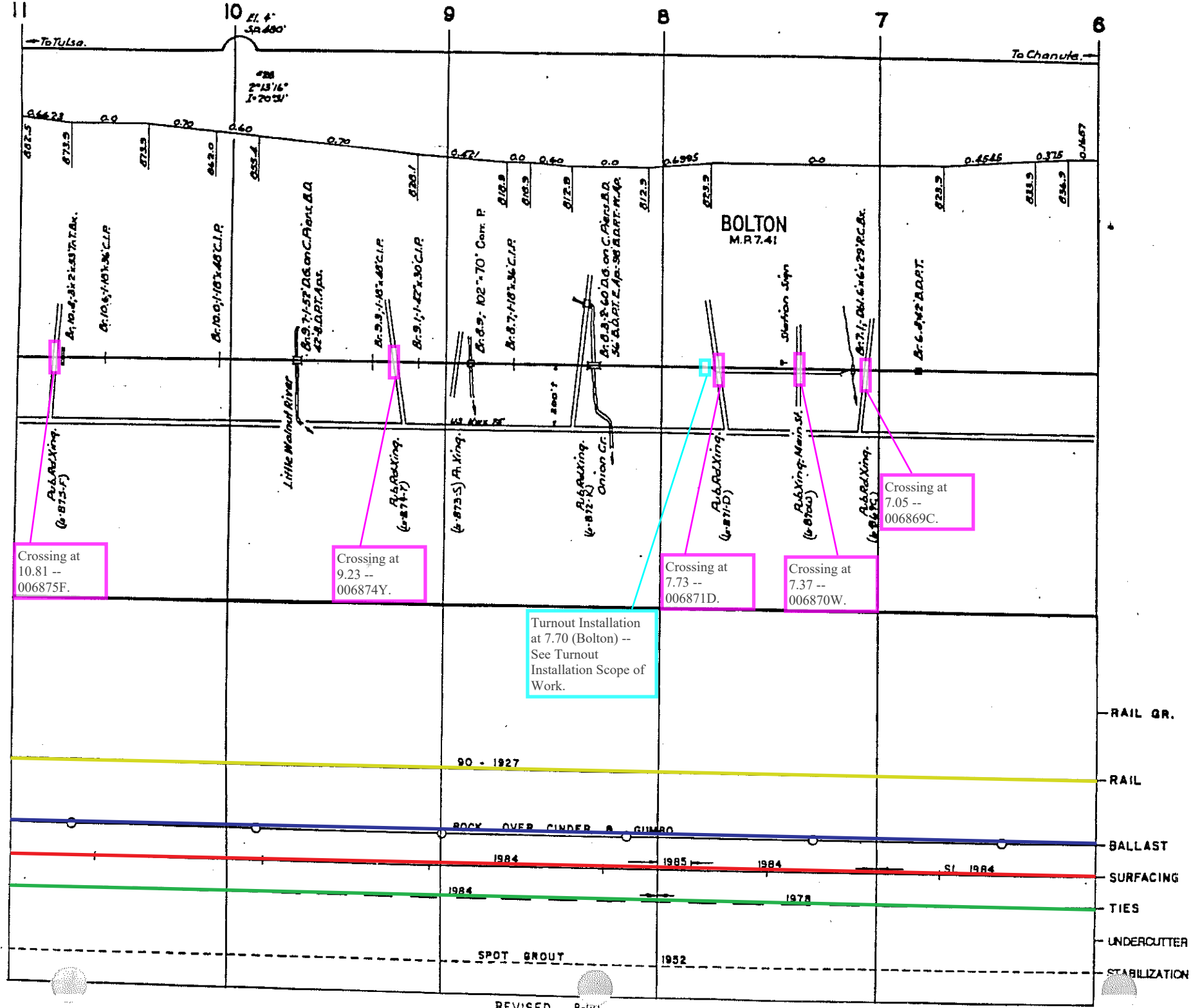
Turnout Installation at 165.3 (Woods Lumber) -- See Turnout Installation Scope of Work.

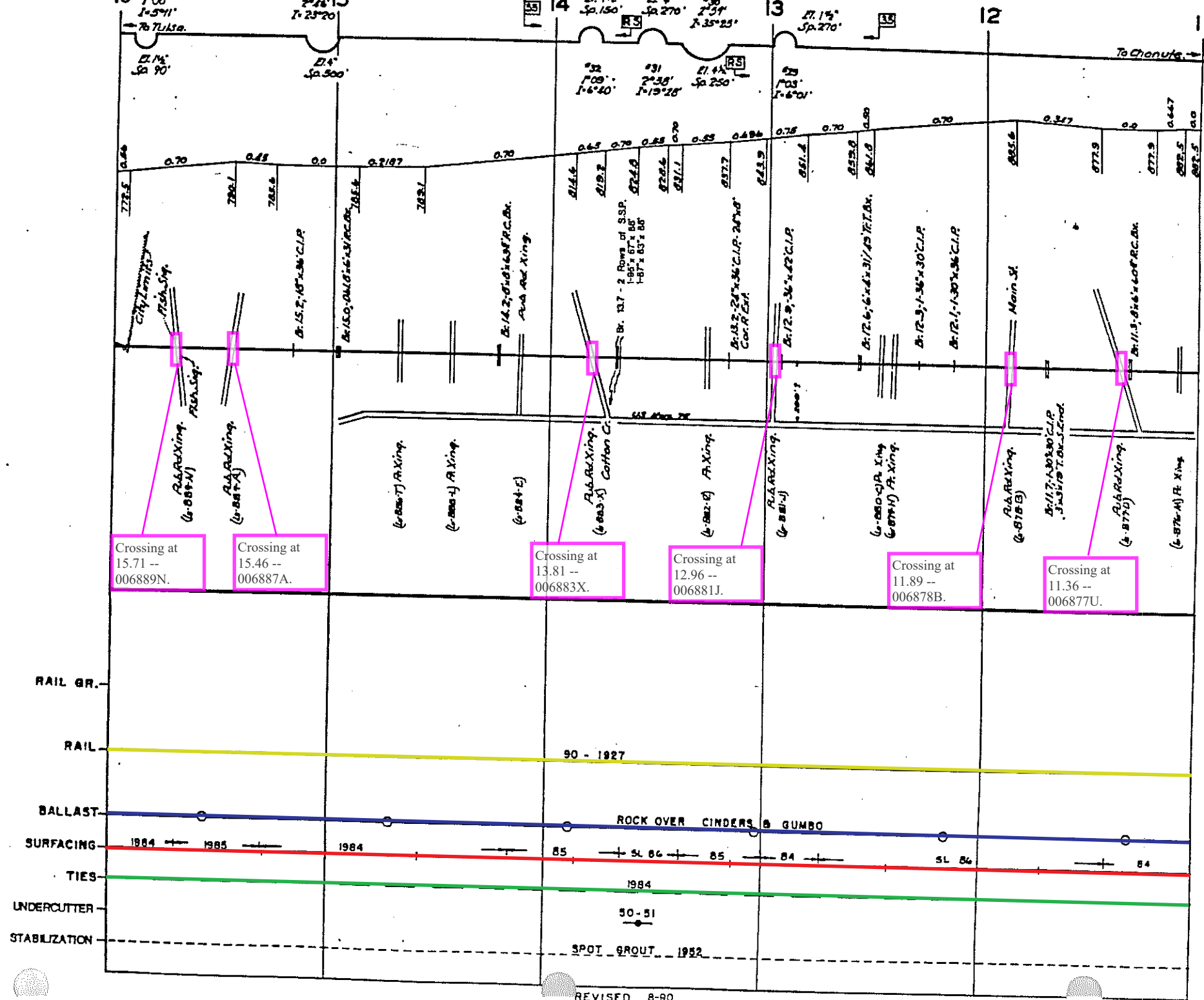
Crossing at 164.47 -- 006846V.

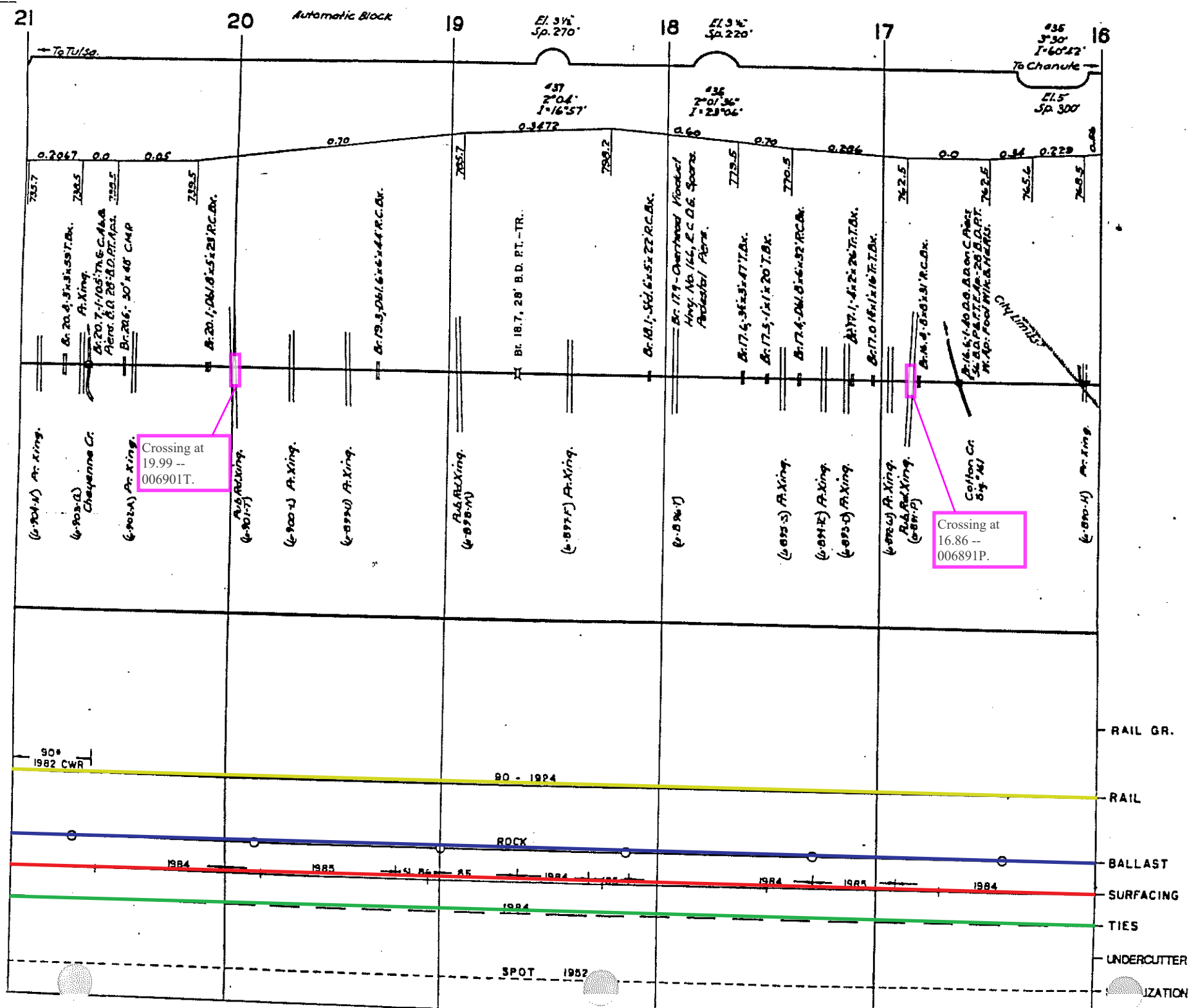
Crossing at 163.32 -- 006844G.

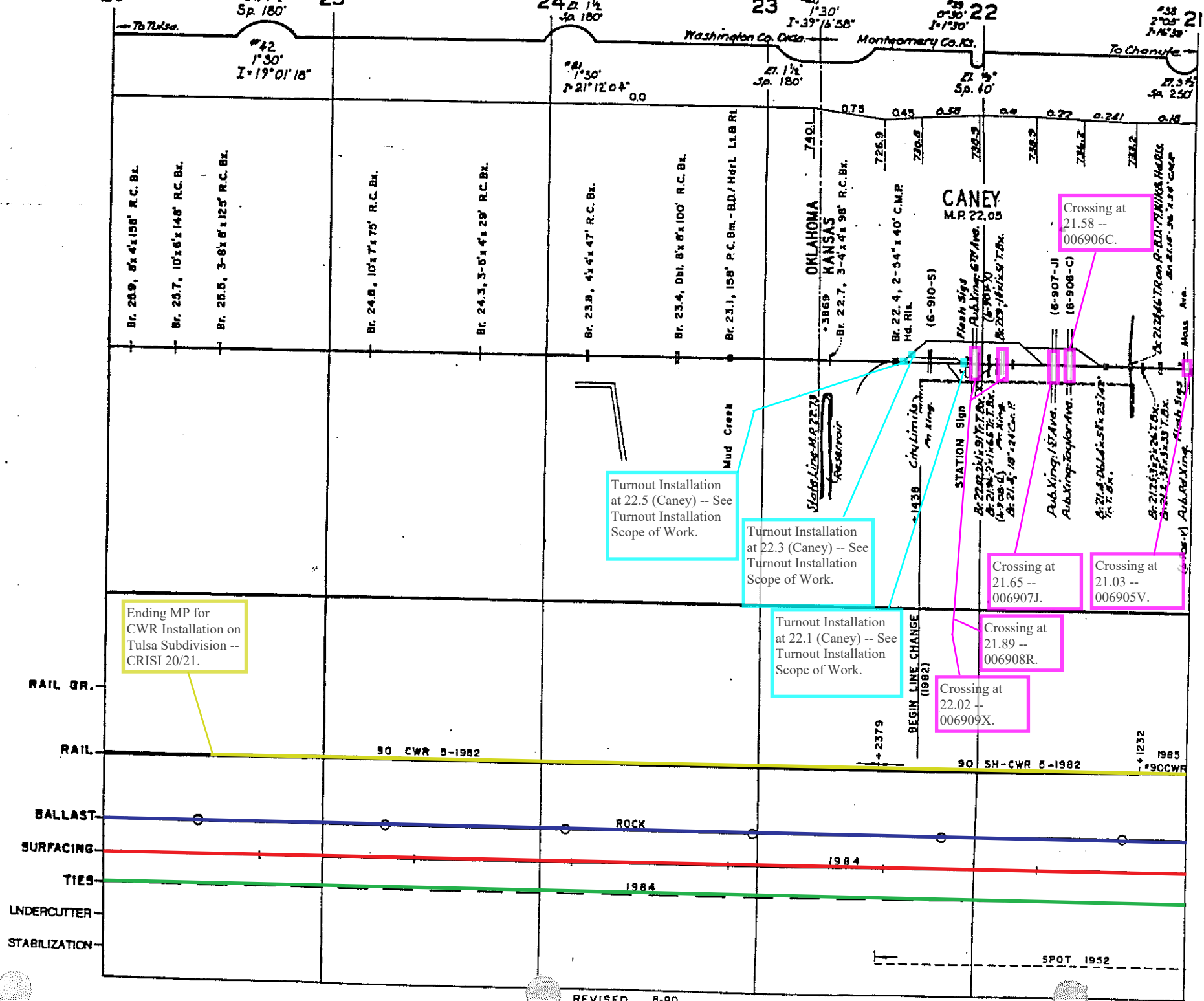
Crossing at 162.17 -- 006841L.

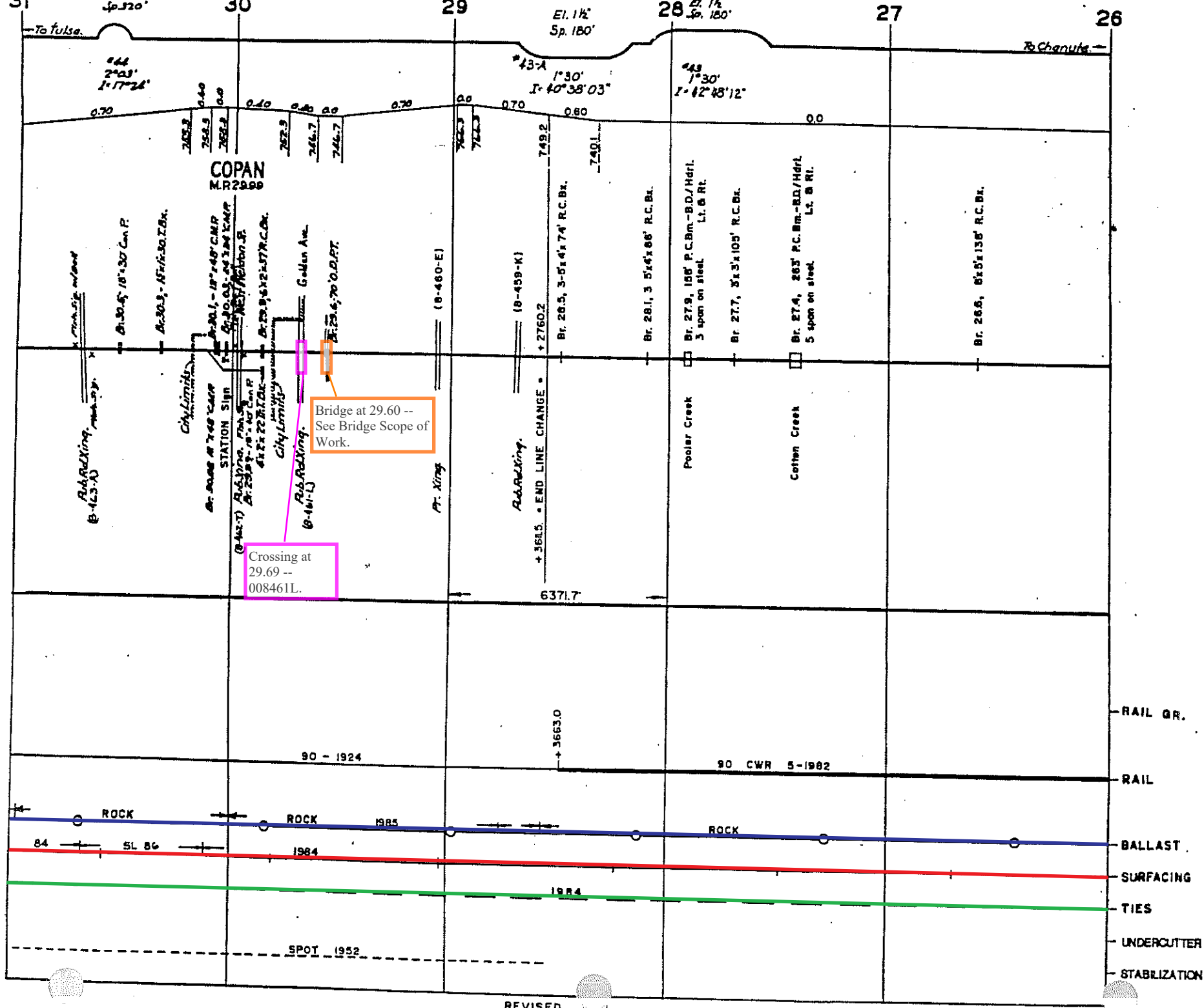






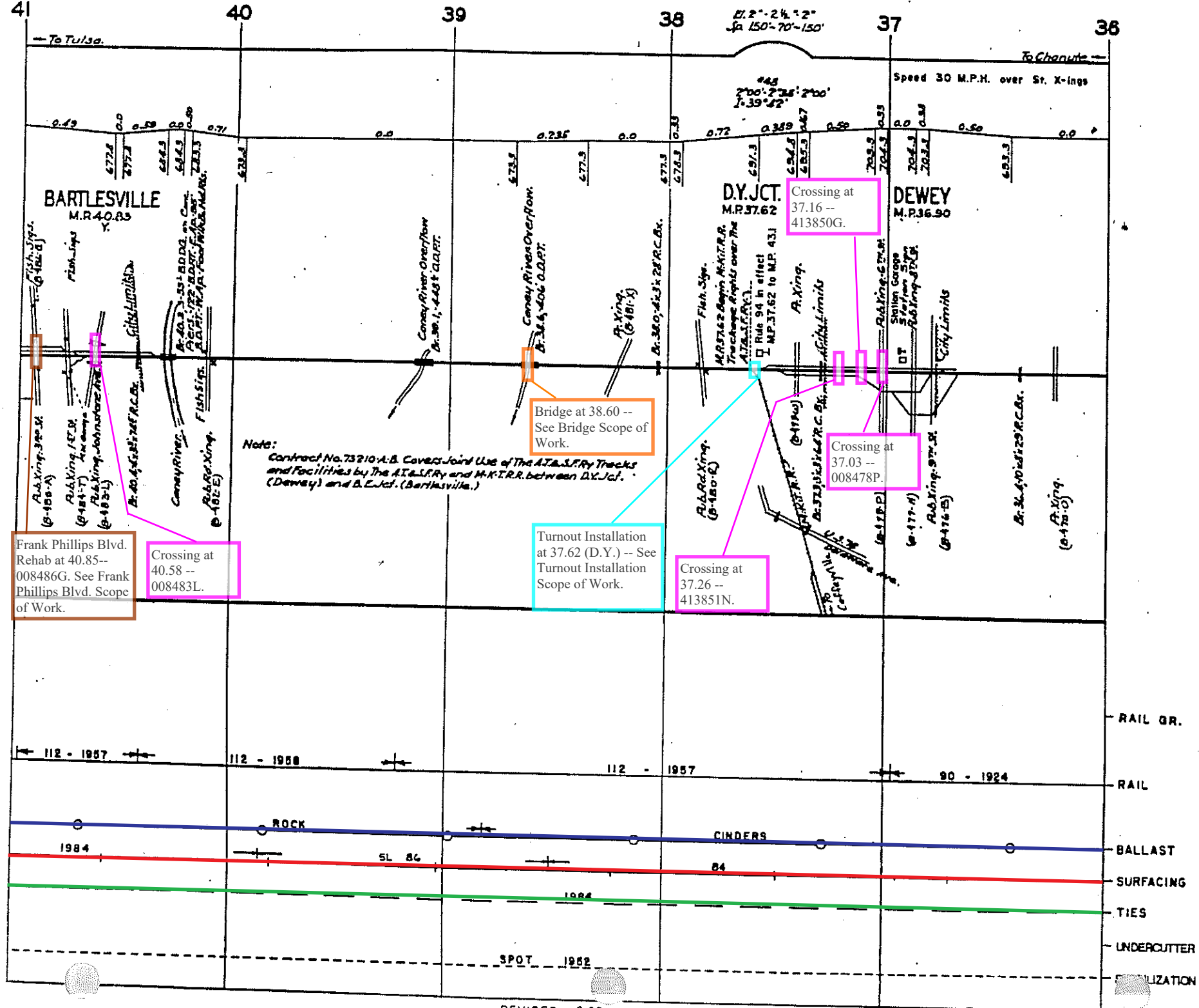


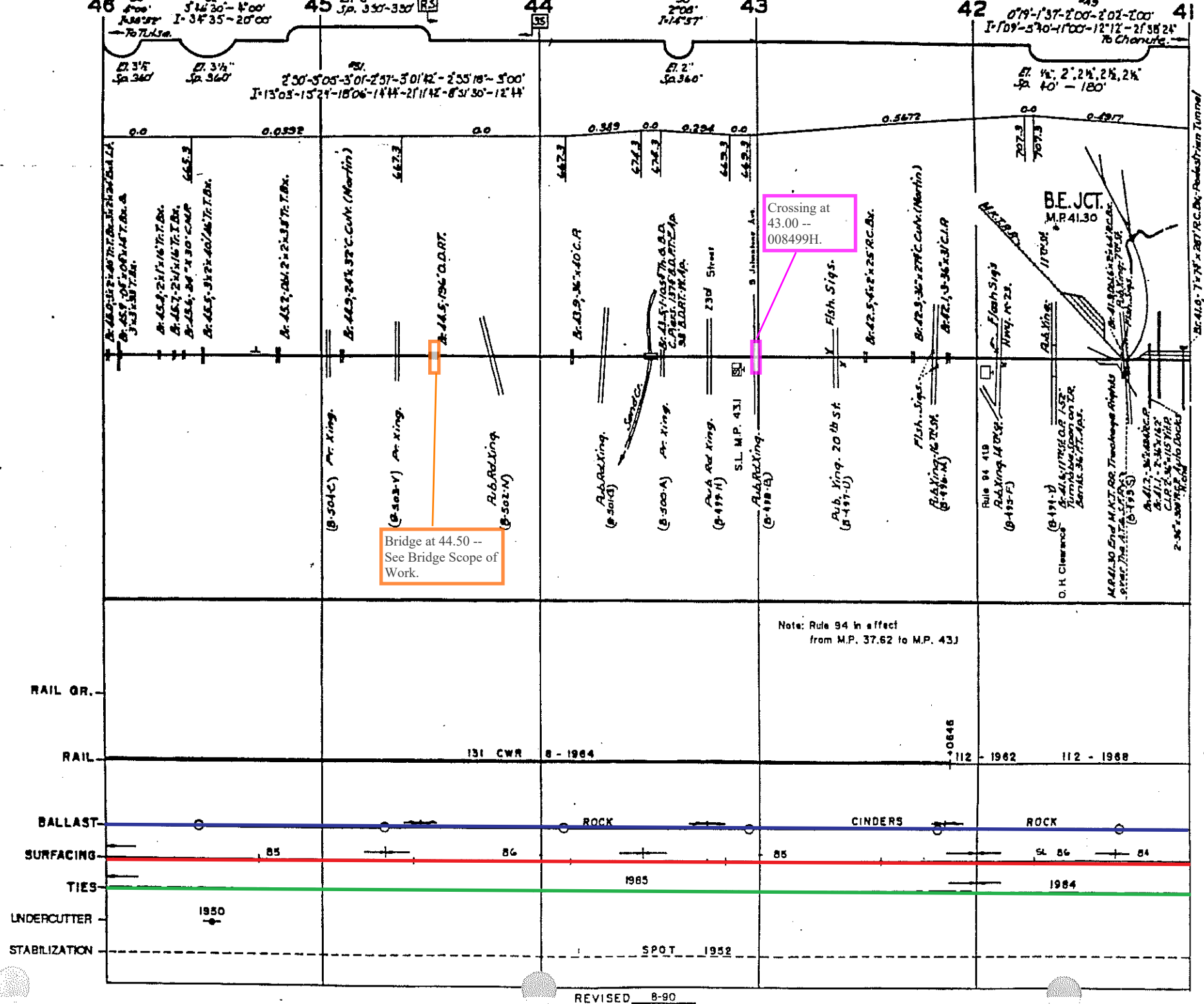




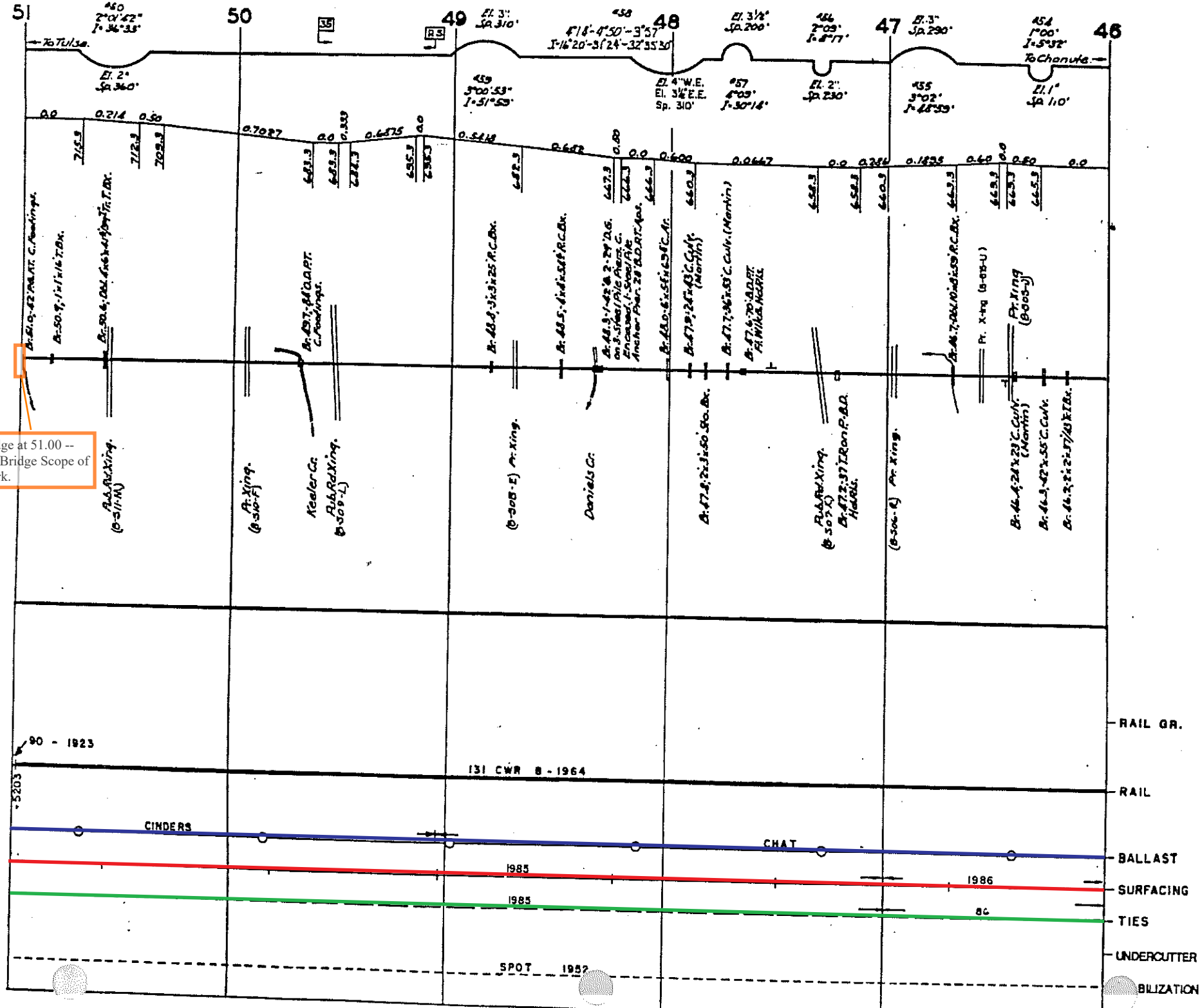
Bridge at 29.60 --
See Bridge Scope of
Work.

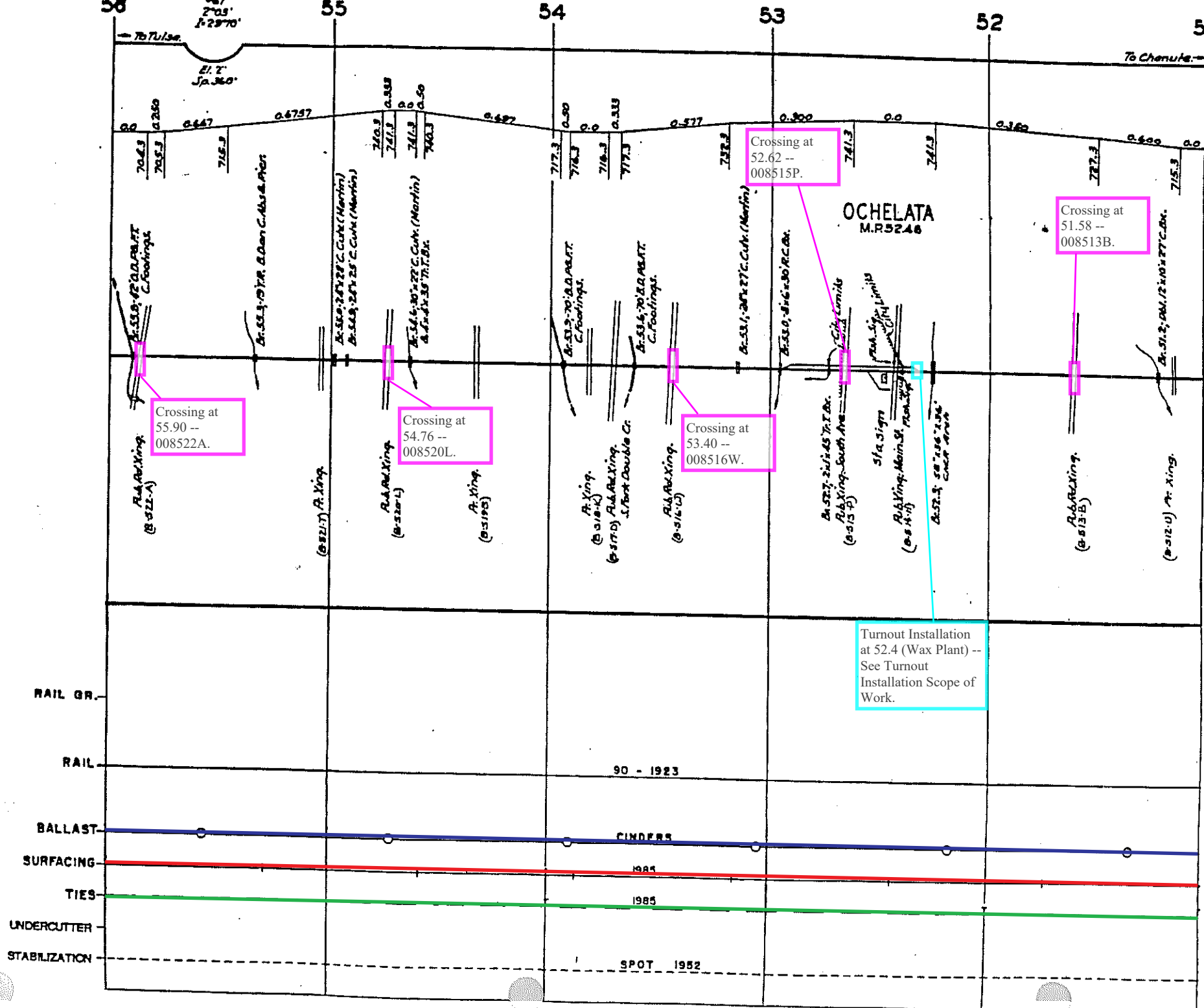
Crossing at
29.69 --
008461L.

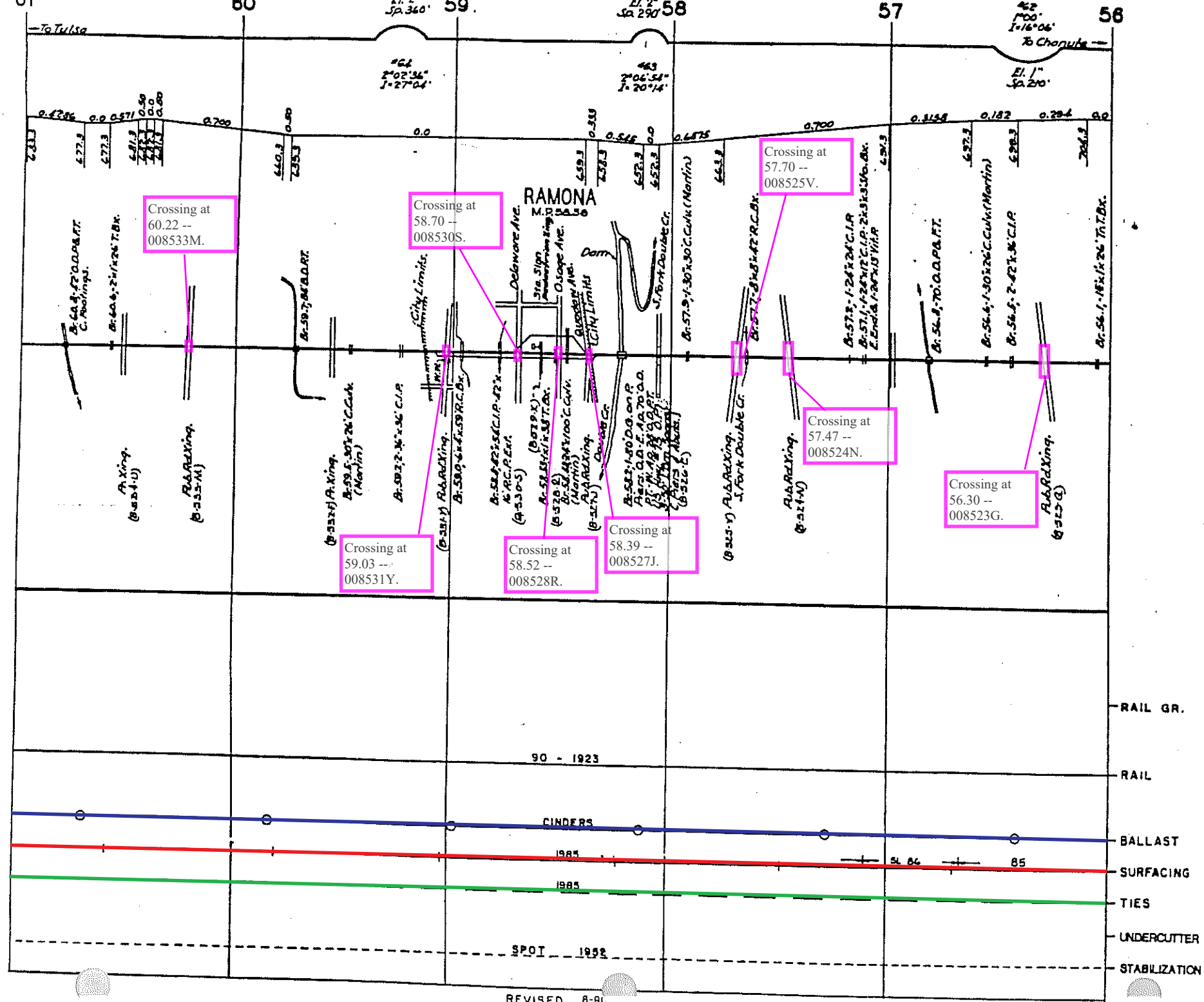


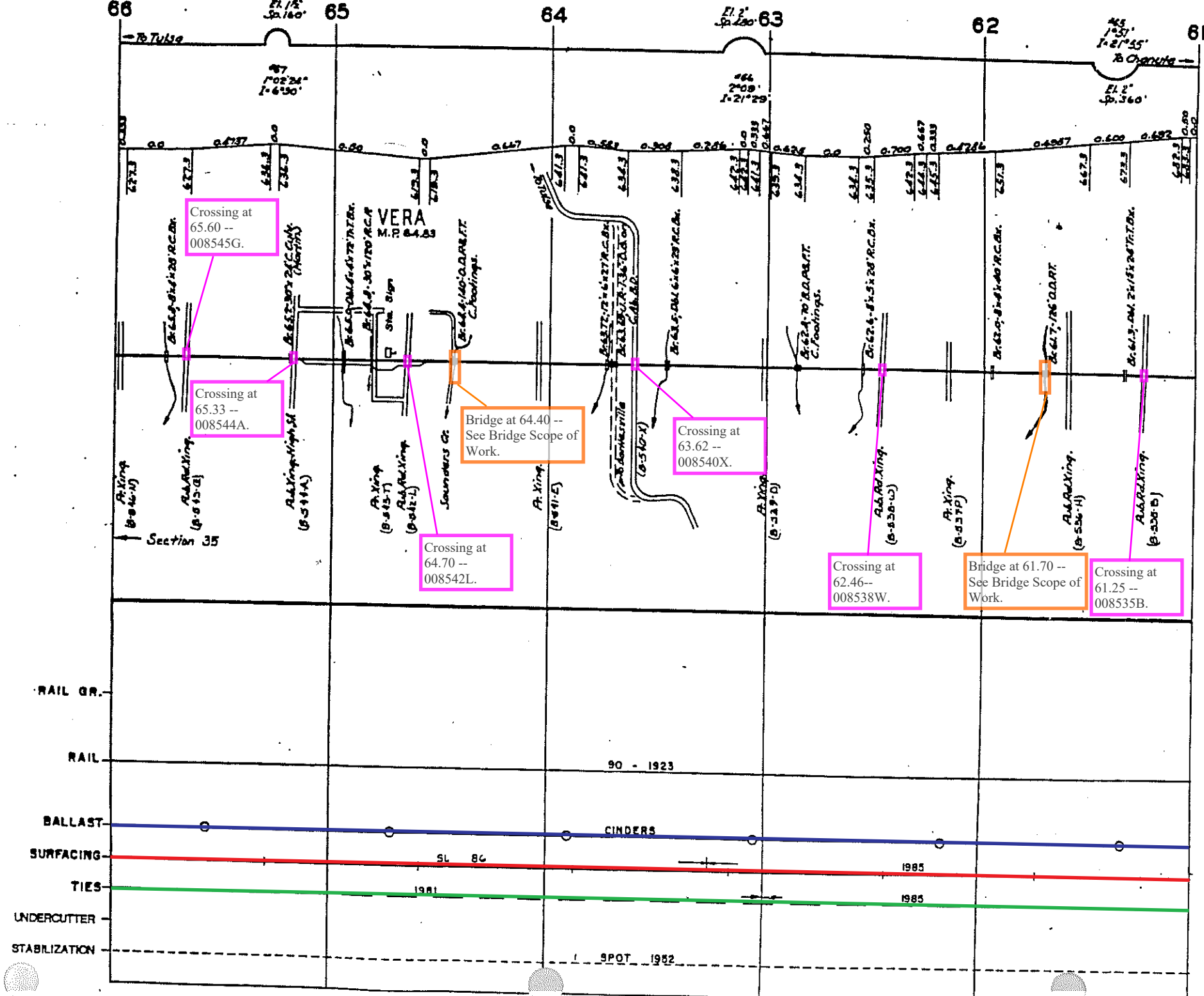


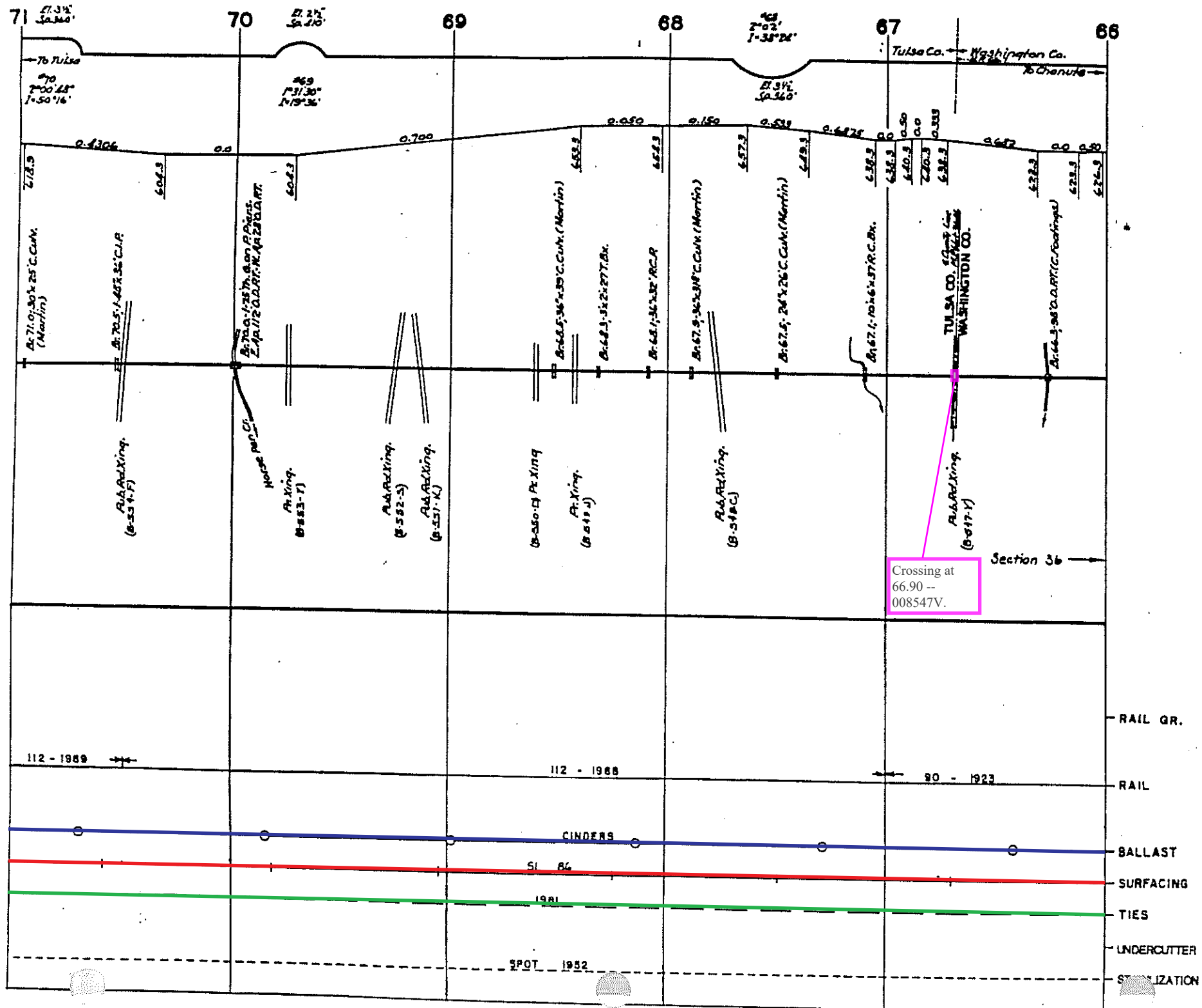
Bridge at 51.00 --
See Bridge Scope of
Work.

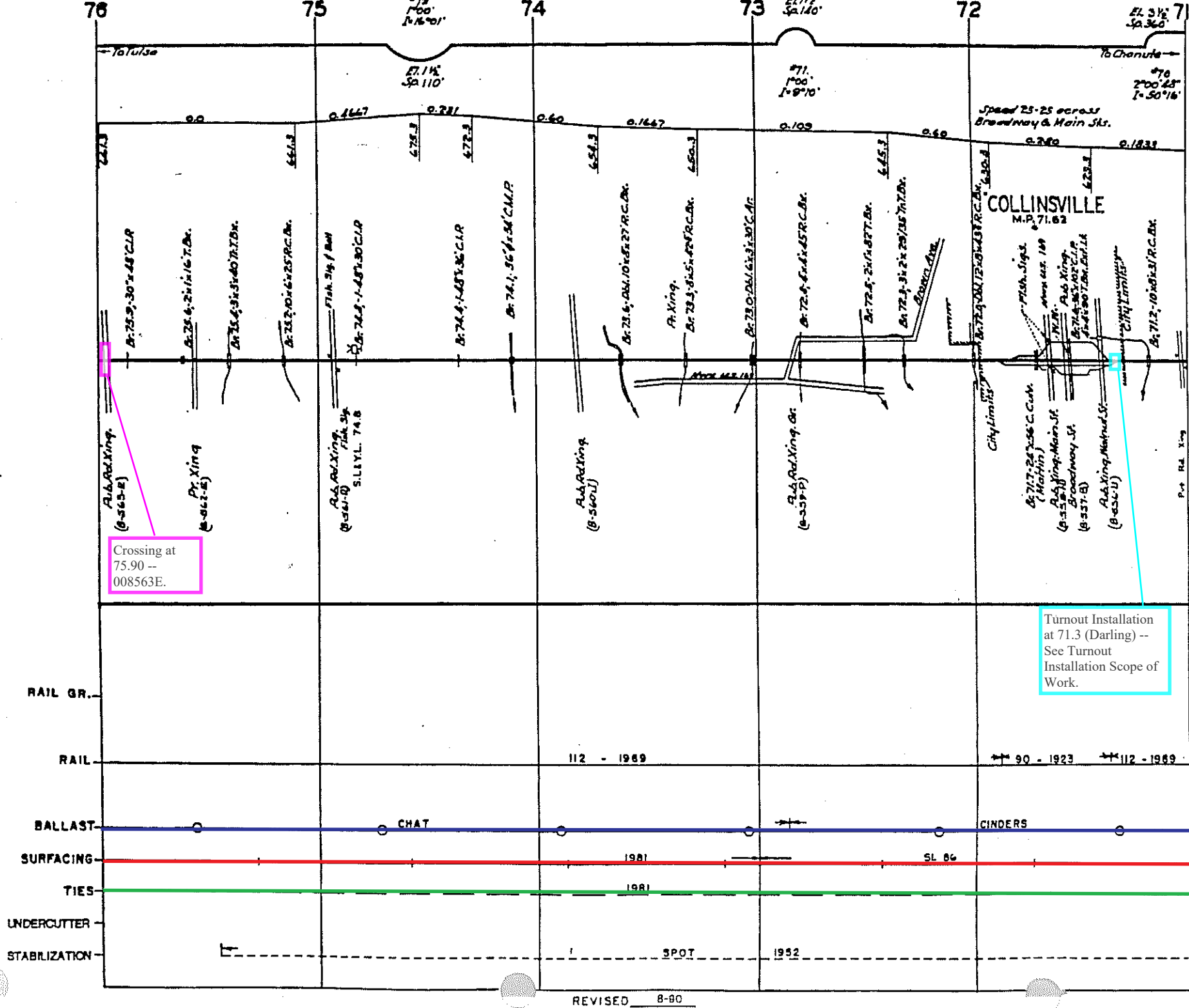


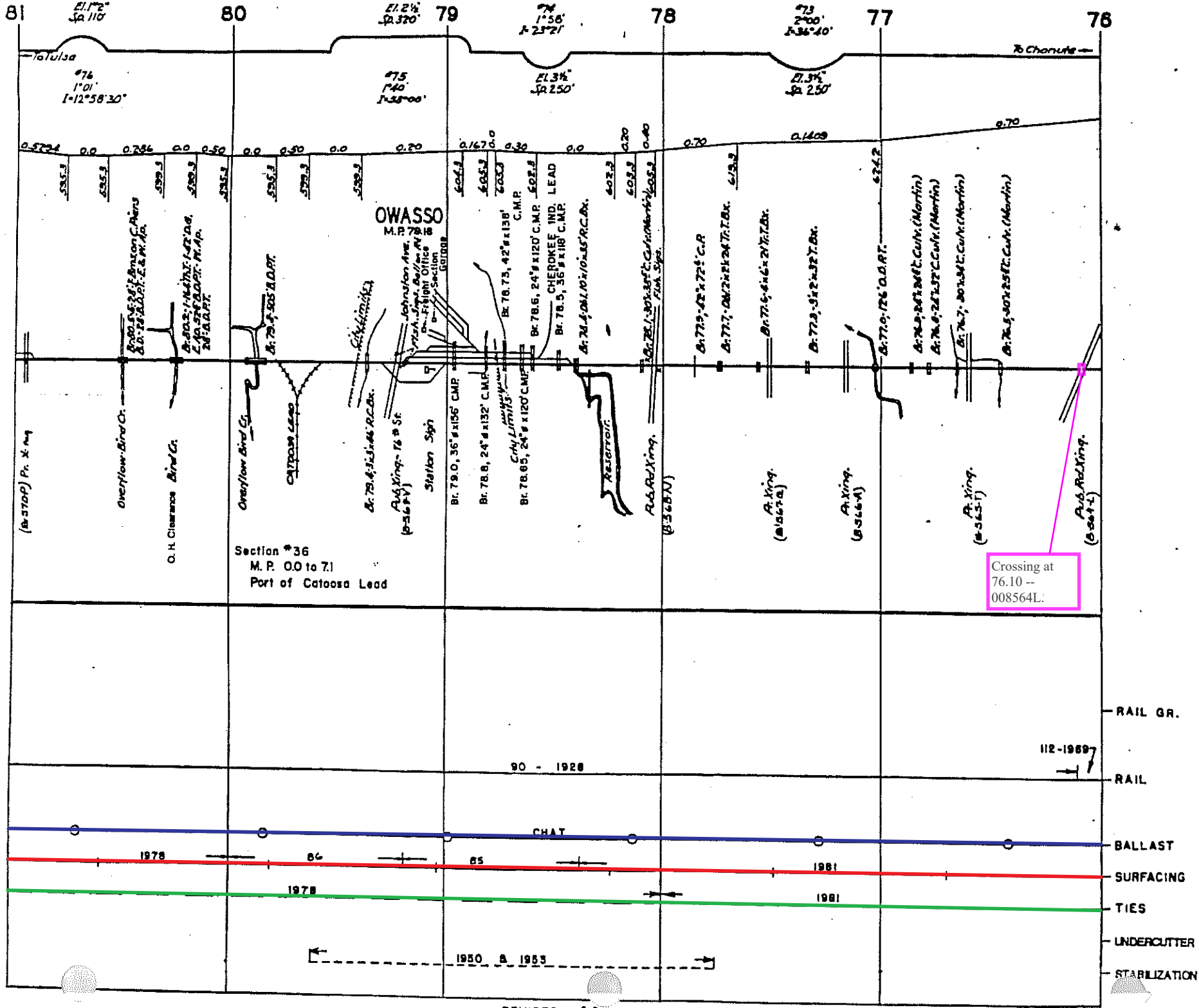




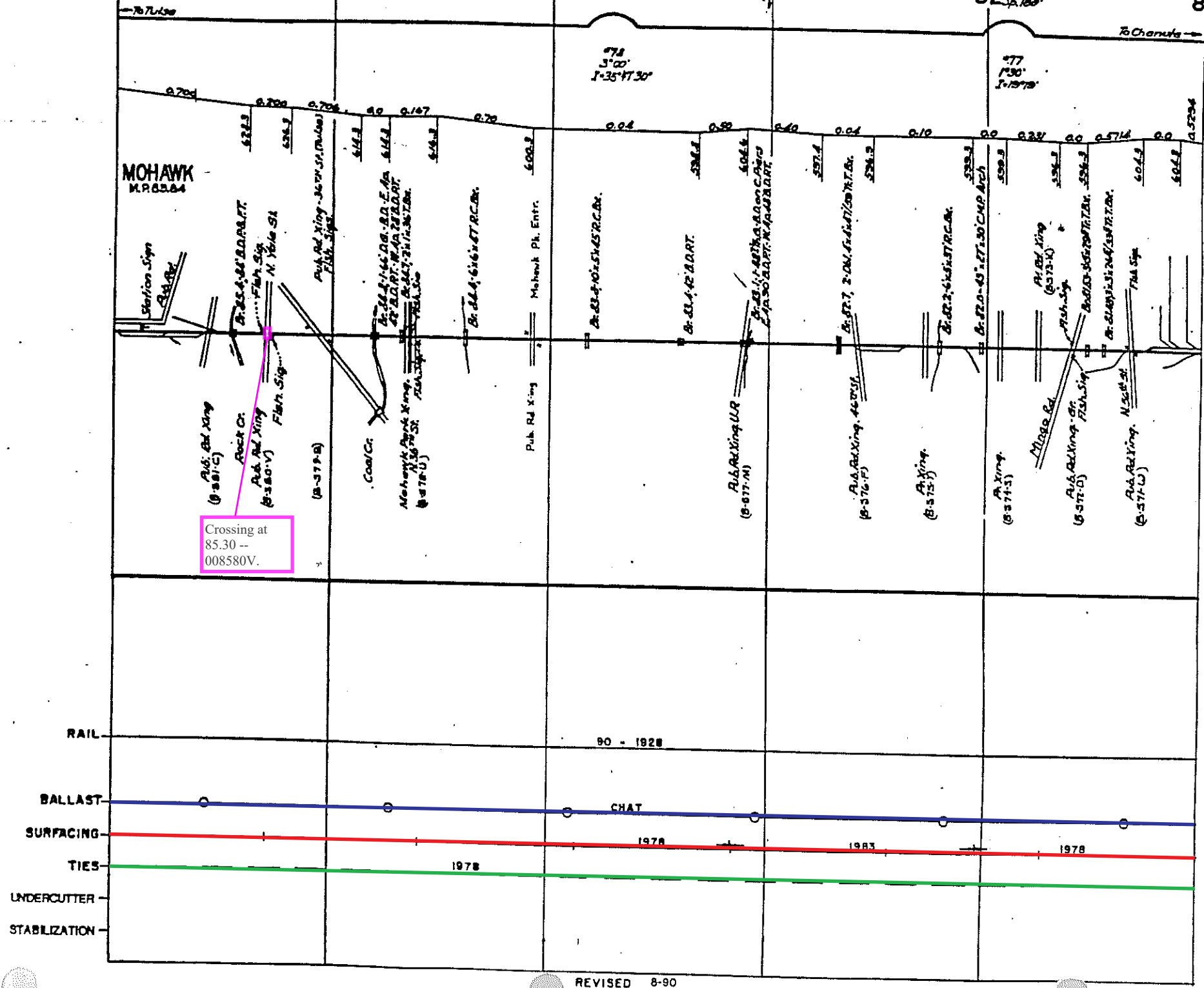








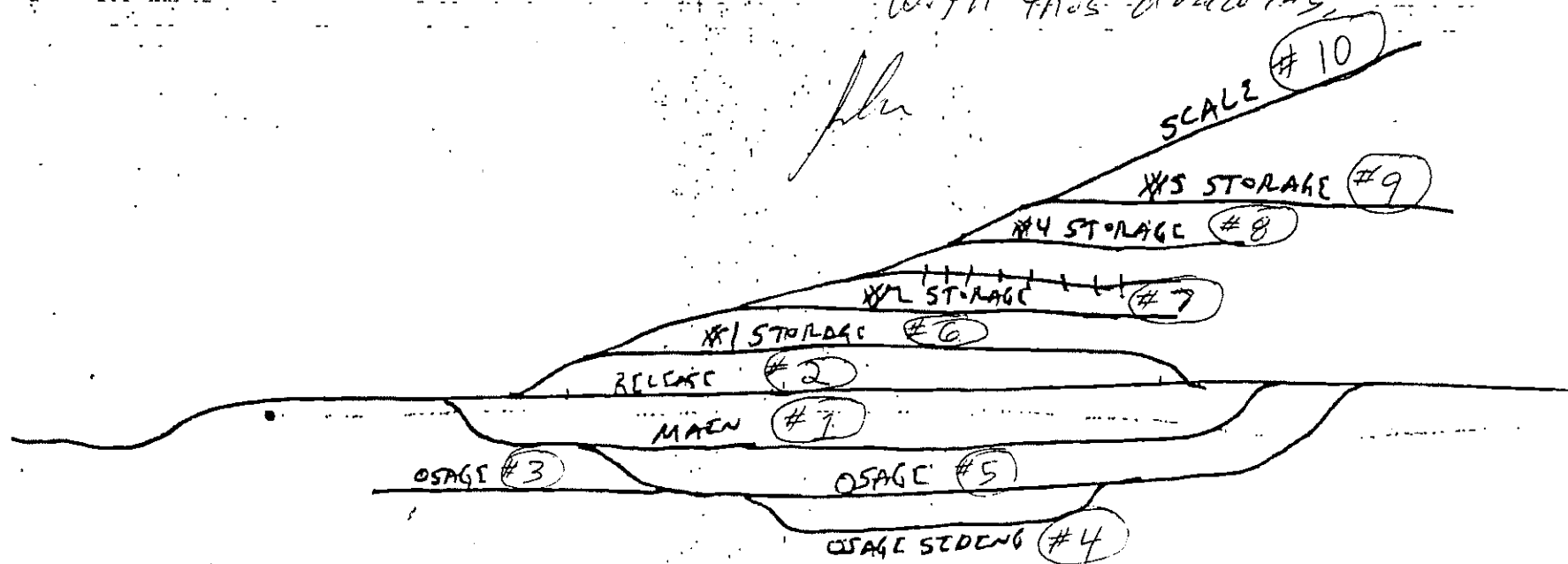
Crossing at
76.10 --
008564L:



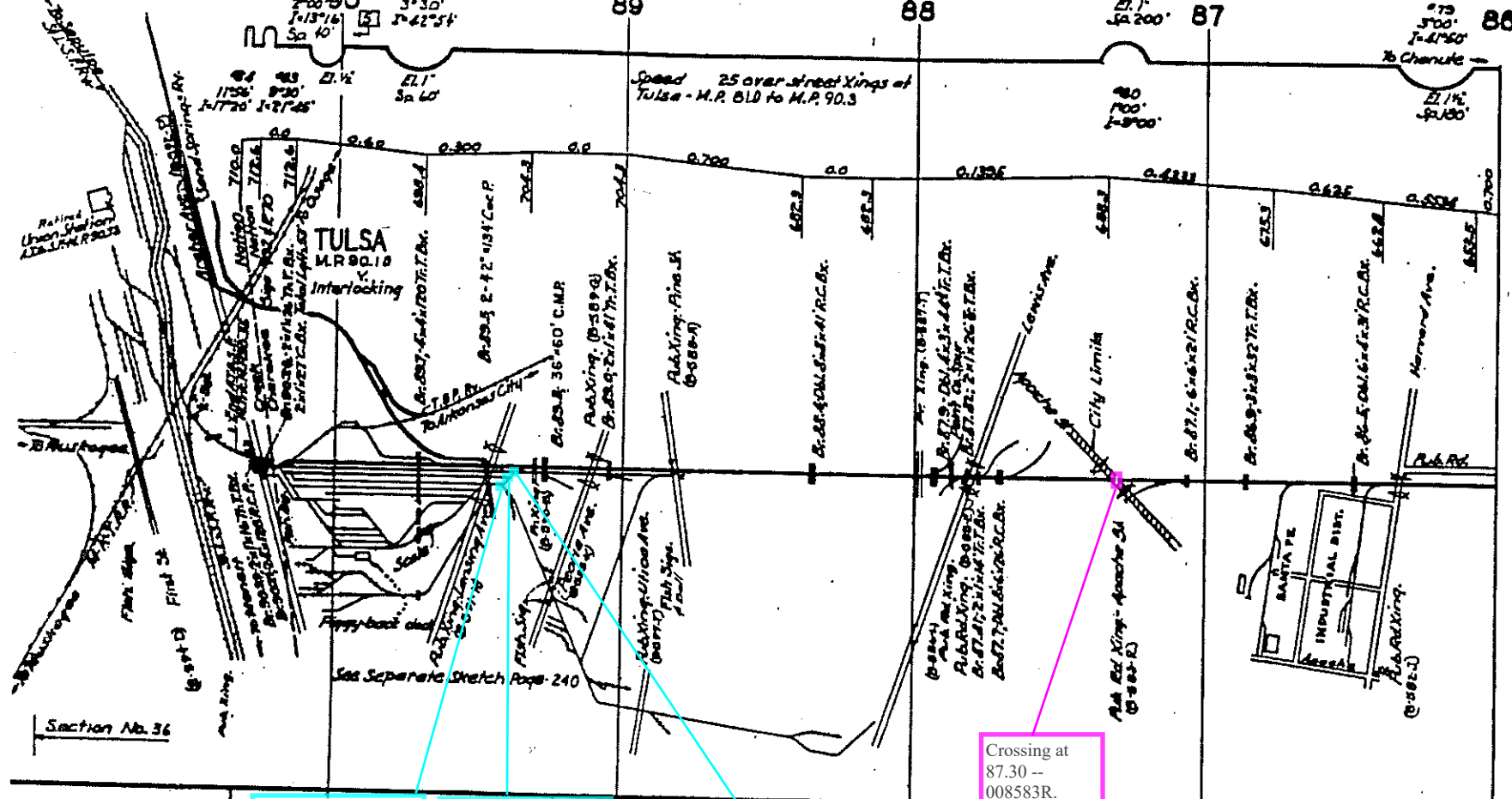
TULSA YALD

N

John, Here is what
I came up with on
how our track numbers
in the computer correspond
with this drawing.







Turnout Installation
at 89.40 (Tulsa) --
See Turnout
Installation Scope of
Work.

Turnout Installation
at 89.37 (Tulsa) --
See Turnout
Installation Scope of
Work.

Turnout Installation
at 89.35 (Tulsa) --
See Turnout
Installation Scope of
Work.

Ending MP for
Ballast on Tulsa
Subdivision --
CRISI 20/21.

Ending MP for
Surfacing on Tulsa
Subdivision --
CRISI 20/21.

Ending MP for Tie
Installation on Tulsa
Subdivision --
CRISI 20/21.